

**BENTONITE HDPE COMPOSITE WATERPROOFING SYSTEMS; BELOW-
GRADE APPLICATIONS, FAILURES, AND SOLUTIONS**

By

Karim P. Allana, PE, RRC, RWC

INTRODUCTION

Sodium bentonite based waterproofing systems have steadily gained in popularity for below-grade application for both blindside and positive side construction. Although bentonite is in many household products, it has become one of the more versatile waterproofing materials available on the market today. Bentonite has many applications that include:

- under slab
- Zero property line (blindside) construction
- back-filled walls
- earth-covered structures
- tunnels
- split-slab deck construction
- Hydrostatic and non-hydrostatic site conditions

There are many manufacturers who offer a variety of bentonite waterproofing systems. Some of these product variations include standard bentonite sheet with a high-density polyethylene (HDPE) waterproofing membrane for repelling water or a multi-layer (bentonite, HDPE, and woven fabric) sheet membrane combination for repelling water and gas. The multi-layer sheet membrane is designed for use with shotcrete and cast-in-place concrete applications.

For the purpose of this presentation, the focus will be on bentonite adhered to HDPE sheet used in blindside construction. Bentonite systems are considered the most effective for blindside applications compared to other non-bentonite methods. Blindside applications include both cast-in-place concrete and shotcrete foundation walls placed against soldier piles and lagging, steel sheet piling, concrete caisson retaining walls, and diaphragm walls.

There are a number of different types of blindside construction procedures and how they impact bentonite based waterproofing systems. A forensic case study of a failed blindside waterproofing system was conducted at the second largest below-grade structure in Northern California having two stories below the water table, built on zero lot line with shotcrete installed against wood lagging and soldier piles. Lessons learned from this forensic study include the impact of wood lagging, the use of shotcrete as opposed to cast in place concrete, and how to repair failed waterproofing with polyurethane grout injection technology. The repairs, being the largest of its kind in the country, were made using injection of several types of chemical grout as a barrier curtain behind the entire surface of the below-grade walls and portions of the slab. Lessons learned from this project prompted the manufacturer of the sodium bentonite/HDPE composite system to make changes in their specifications for application of their products, acceptable substrates, and shotcrete. Additionally, these lessons will help consultants who design below grade waterproofing systems as well as monitors who perform quality assurance roles.

HISTORY

In 2005, the U.S. was the top producer of bentonite with an almost one-third world share followed by China and Greece, reports the British Geological Survey.

The absorbent clay was given the name bentonite by an American geologist sometime after its discovery in about 1890 at the Benton Formation (a geological stratum, at one time Fort Benton) in Montana's Rock Creek area. Other modern discoveries include montmorillonite discovered in 1847 in Montmorillon in the Vienne prefecture of France, in Poitou-Charentes, South of the Loire Valley.

Most high grade commercial sodium bentonite mined in the United States comes from the area between the Black Hills of South Dakota and the Big Horn Basin of Wyoming. Sodium bentonite is also mined in the southwestern United States, in Greece and in other regions of the world. Calcium bentonite is mined in the Great Plains, Central Mountains and south eastern regions of the United States. Supposedly the world's largest current reserve of bentonite is Chongzuo in China's Guangxi province.

What is Bentonite?

Bentonite was formed from volcanic ash deposited in an ancient sea where it was modified by a geological process into sodium bentonite. Bentonites were calculated to have accumulated between 70 and 74.5 million years ago. At that time, the area was the center of a huge shallow inland sea stretching from the Arctic Ocean to present day Mexico and was nearly a 1,000 miles wide.



Sodium Bentonite Granules

Bentonite is an absorbent aluminum phyllosilicate generally composed of impure clay. There are two types of bentonite; a swelling, sodium bentonite and non-swelling, calcium bentonite. It forms from weathering of volcanic ash, most often in the presence of water.

Sodium bentonite expands when wet, absorbing up to eight times its dry mass in water, which gives it tremendous sealing properties. Sodium bentonite has been called the clay of a thousand uses. It contains exchangeable sodium cations, which are positively charged ions that attract the cathode in electrolysis. When the cations are dispersed in water, they separate into plate-like particles, which are negatively charged on the surface and positively charged on the edges. This unique ion exchange relationship is responsible for the expansion, binding or absorbing action that takes place. Bentonite's small plate-like particles provide a tremendous potential for increasing surface area. It forms thixotropic gels with water even when the amount of bentonite is relatively small. Modern chemical processes can modify the ionic surface of sodium bentonite dramatically intensifying the



Sodium Bentonite Expansion Dry/Wet

binding or absorbing action. This result is so remarkable that dough-like casting sand mixes can endure molten metal temperatures. These characteristics and modifications give bentonite an enormous range of potential uses.

Besides below-grade waterproofing as an industrial application, it is commonly used in drilling mud for oil and gas wells in geotechnical and environmental investigations, in the sealing of subsurface disposal systems for spent nuclear fuel, and for quarantining metal pollutants of groundwater. Other uses include making slurry walls, forming other impermeable barriers such as plugging old wells, lining the base of landfills to prevent leachate migration into the soil, as an animal feed binder, kitty litter, or as a stucco and mortar plasticizer.

The binding action of bentonite allows high-pressure ramming or pressing of the clay into molds to produce hard, refractory shapes, such as model rocket nozzles. An easy demonstration of this would be to get a brand of cat litter known to contain bentonite and simply ram a sample of the granules with a hammer into a sturdy tube with a close-fitting rod. It will form a very hard consolidated plug that is not easily crumbled.

Bentonite also has the unique property of adsorbing relatively large amounts of protein molecules from liquids. This property has become useful in the process of winemaking where it is used to remove excessive amounts of protein from white wines. Bentonite prevents most white wines from precipitating undesirable flocculent clouds or hazes upon exposure to warmer temperatures as these proteins denature. It also induces more rapid clarification of both red and white wines.

Calcium bentonite, the non-swelling bentonite, is sold within the alternative health market for its purported cleansing properties. It is usually combined with water and ingested, often as part of a detox diet. Calcium bentonite may be converted to sodium bentonite and take on properties typical of sodium bentonite by a process known as "ion exchange". Commonly this means adding 5-10% of sodium carbonate to wet bentonite, mixing well, and allowing time for the ion exchange to take place. Calcium bentonite is not used in below-grade waterproofing.

MINING PROCESS

Mining of bentonite is much different from traditional mining methods. The process allows the reclamation of the mining site to be restored to its near original condition making this an acceptable product for sustainable building. Before mining bentonite can begin, a detailed plan for extracting the mineral is developed by drilling and sampling. Once the area and depths are defined, mining begins by removing the overburden from the mineral deposit with large earth



Sodium Bentonite Mining Quarry

movers. The overburden is then stockpiled nearby for reclamation after the bentonite has been removed from the bed. When extracting the bentonite from the bed, extreme care is taken to avoid contaminating the mineral deposit with the overburden, thus ensuring a high quality of the raw material. Care is also taken to conserve as much bentonite as possible when trimming the overburden from the bentonite.

When all the bentonite has been removed from the bed, reclamation begins. The surface of the mine site is returned to equal or superior condition prior to mining. Many bentonite mining companies return the mining sites back to its natural habitat for plants, animals, and other environmental considerations.

The bentonite from each bed is stockpiled and tested for quality. The bentonite is then carefully dried and ground to meet product specifications. The finished product is stored in silos until it is shipped to manufacturers of bentonite products.

HISTORICAL USE IN BELOW-GRADE WATERPROOFING APPLICATIONS

Bentonite waterproofing materials were introduced in the mid-1920s and primarily used in granular form for the sealing of pond liners and compacted-earth dams until the late 1950s. Shortly after, it was introduced into the building waterproofing market and by the mid-1960s a line up of bentonite products were made available in panels, sheets, trowelable and sprayed forms. These distinct applications are the precursors of what may be considered to be one of today's more versatile products.

Sprayed and troweled applications have nearly gone away due to the difficulty in applying uniform thickness and a tendency to hydrate prematurely. The first commercially available bentonite system, bentonite-filled cardboard panels, is not widely used today. The panel system has been supplemented by composite products consisting of bentonite combined with HDPE geomembrane or durable geotextiles. These new composite materials are easier to install and provide better barrier performance. Typical composite roll widths are four-feet and lengths vary from 15 feet to 24 feet. The common forms of composite bentonite waterproofing products have bentonite granules either encapsulated between polypropylene geotextile fabrics or laminated to one side of a HDPE geomembrane sheet. Both of these product forms are appropriate for blindside and positive side construction. They contain roughly one pound of bentonite granules per square foot.

The product installed on this case study project was the bentonite/HDPE composite system. The HDPE layer is intended to provide the first water barrier layer and prevent pre-hydration from rain or existing groundwater. Because the HDPE liner does not encapsulate and contain the bentonite, the bentonite can be susceptible to pre-hydration and free swell which can result in diminished performance potential.

COMMERCIAL BENTONITE/HDPE PRODUCTS

Tremco produces several different bentonite/HDPE composite waterproofing products. Paraseal and Paraseal LG are described below. Both systems are used in blindside

construction applications but have different design characteristics. These characteristics are described and a technical data table provided herein.

TREMCO - PARASEAL LG

Paraseal LG is a multi-layer sheet membrane waterproofing system. It consists of a self-sealing, expandable layer of granular bentonite. The bentonite layer is laminated at the rate of up to one pound per square foot to impermeable HDPE. The third component is a protective layer of spun polypropylene. Together, these three components form a waterproofing membrane manufactured in controlled thicknesses of 170 mils to 200 mils. This multiple component sheet membrane waterproofing system is specially designed for blindside installations such as lagging, under floor slabs and elevator pits. Paraseal LG also withstands applications where shotcrete is blown directly into the face of the membrane.

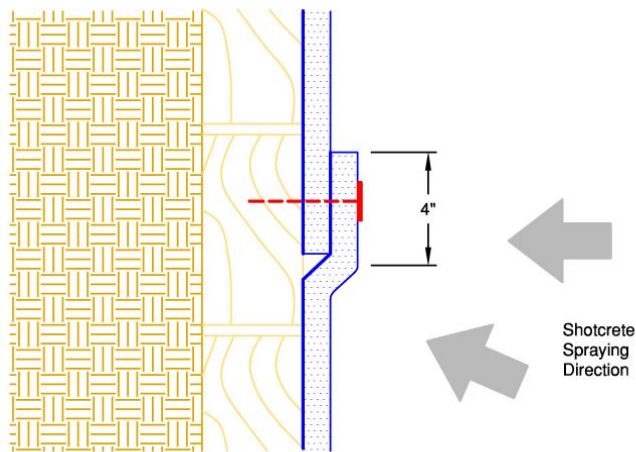
Paraseal LG can be effective when waterproofing from the blindside where the waterproofing membrane is applied before the walls are poured. It is designed to resist damage from multiple exposures to inclement weather, extremely abrasive concrete pours or direct installation of shotcrete. Paraseal LG will also exhibit protection against water intrusion in areas of high water heads.

Inherent limitations of bentonite HDPE composite membrane include application in brackish or slightly salty groundwater, standing water or over snow. For brackish conditions, Saltwater Paraseal should be specified, which contains a chemically treated bentonite to swell when soils have high alkalinity. However, the bentonite only swells to half the rate compared to standard bentonite in freshwater conditions. Additionally, Paraseal products require compaction/confinement to be effective in fresh or brackish conditions. A minimum confinement of 24 psf is required.

All blindside installations have bentonite side facing installer so that the bentonite is in direct contact with the concrete to be waterproofed. Examine all surfaces prior to starting application. All spaces between lagging larger than 1" (2.5cm) shall be covered with 3/4" (6.4mm) treated plywood prior to installation.

Lagging Installation:

Paraseal LG may be installed in a vertical or horizontal direction. Lap joints 3" (7.6cm) shingle fashion (top over bottom) when pouring against, 4" (10.2cm) shingle fashion (bottom over top) when shotcreting against. Fasten all seams at 4" (10.2cm) over center. Apply Paramastic, TREMproof 201/60T or TREMproof 250GC-T around all tiebacks and penetrations. To prevent prehydration, protect the installed panels from flooding prior to concrete pour.



Notes:

When Spraying Shotcrete or Other Materials Against Paraseal Products, Spray Either Directly at Seam or at Closed Edge of Seam So As Not To Lodge Sprayed Material Between Lapped Sheets. Never Spray Into Open Edge of Seam.

When Spraying Shotcrete or Other Materials Use Paraseal LG ONLY.

Seams May Run Horizontal (As Shown) or Vertical. When Running Horizontal The Open Edge of The 4" Seams Should Be Aiming Up.

Nail 4" Seams Every 24" o.c. and Staple Every 3" o.c. (BSW-28)

Proper Installation of Shotcrete Against Paraseal LG.

Penetration:

Tiebacks, tie bolts, misaligned soldier piles, whalers and bracking may all penetrate the Paraseal LG membrane and must be detailed properly.

Protection:

The Paraseal LG dual waterproofing system has a puncture resistant HDPE liner of 169-lb point load (76.6 kg) and does not require an additional protection course for most applications.

Storage:

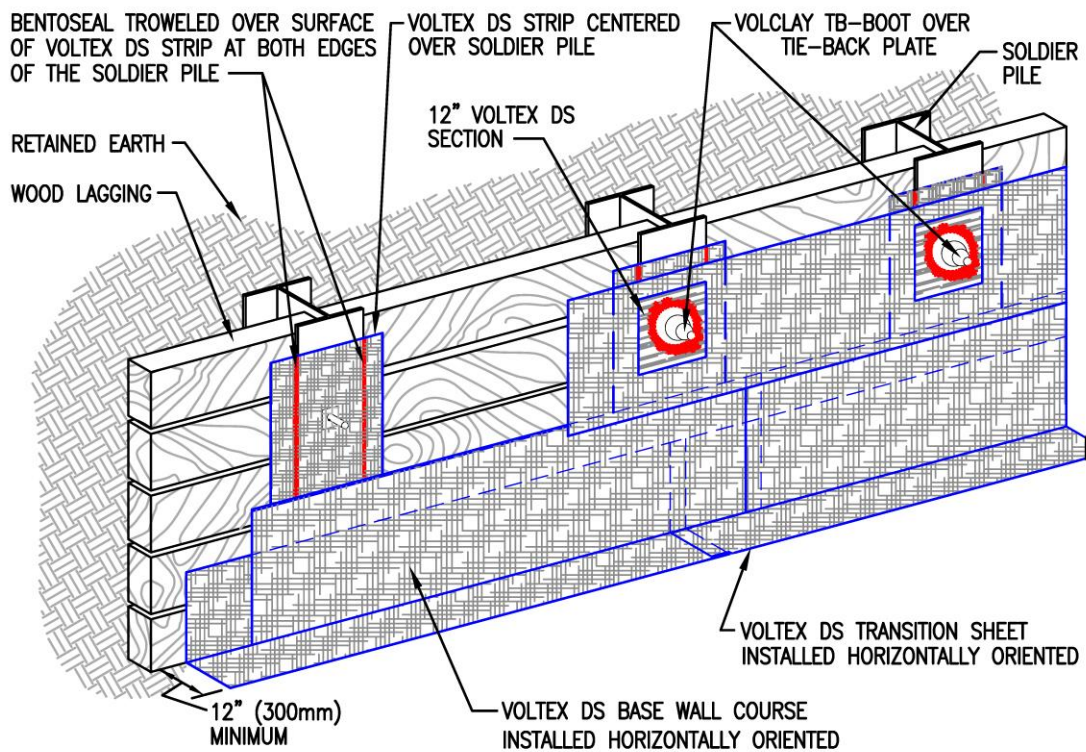
Protect from moisture. Store on skid or pallet, cover with polyethylene or tarp. Do not double stack pallets.

Warranty:

Tremco warrants its Paraseal Membranes to be free of defects in materials, but makes no warranty as to appearance or color. Since methods of application can affect performance, Tremco makes no other warranty, expressed or implied, including warranties of merchantability and fitness for a particular purpose, with respect to Paraseal Membranes. Tremco's sole obligation shall be, at its option, to replace or to refund the purchase price of the quantity of Paraseal membrane proved to be defective and Tremco shall not be liable for any loss or damage including incidental or consequential damages arising from the use of Paraseal Membranes.

CETCO – VOLCLAY VOLTEX DS

Voltex is the geotextile line of the Volclay bentonite waterproofing panel systems. The Voltex composite is comprised of two high strength geotextiles sandwiching 1.10-lbs. of sodium bentonite per square foot. The Voltex DS adds an integrated polyethylene liner to the geotextile layer for added protection. The two geotextiles are interlocked by a



patented needle-punching process which sandwiches and holds the granular bentonite in place for a more consistent application of material.

Voltex DS is ideal for waterproofing under slabs and blindside applications. Under slabs, Voltex DS can be installed directly over a properly prepared substrate without the need of a concrete mud slab. Its durable composite construction resists damage from tradesman installing reinforcing steel over it. For blindside applications, Voltex DS is simply installed against the retention wall and then the concrete is poured directly against it using a single sided form. Other applications include backfilled concrete foundation walls, shotcrete, and cut-and-cover tunnels.

Installation of Voltex DS is fast and easy. Simply place into position with the woven geotextile side (dark gray) facing the installer so that the shotcrete will be shot against the geotextile side. Secure with a washer head mechanical fastener. Voltex can be installed to green concrete without primers or adhesives, in virtually any weather, including freezing temperatures and damp conditions. When concrete is poured against Voltex DS, a tenacious mechanical bond yielding an average adhesion value of 15 pounds per linear inch (15 pli) is created by the wet concrete solidifying around the geotextile fibers. Use Voltex DS with reinforced shotcrete walls, minimum of 8" thick applied from the bottom up to their full design thickness in a single application with lift heights limited to a maximum of four feet.

Voltex DS is designed only for below-grade and/or confined waterproofing applications. Volclay products should not be installed in standing water. If ground water contains strong acids, alkalis, or is of a conductivity of 2,500 $\mu\text{mhos/cm}$ or greater, water

samples should be submitted for compatibility testing. Volclay Ultraseal SP may be required if contaminated groundwater or saltwater conditions exist.

Voltex DS is certified by NSF International to conform to the requirements of NSF Standard 61 – Drinking Water System Components – Health effects. Voltex DS is certified as an external protective barrier material for potable water concrete tanks with a 1,000 gallon (3,780 l) capacity or greater.

For contaminated water or brackish conditions, Voltex DS is available with a contaminant resistant Volclay sodium bentonite – Voltex DSCR. Volclay sodium bentonite is a technological advancement in below-grade waterproofing that combines natural sodium bentonite and a chemically resistant hydrophilic polymer to form a bentonite-polymer alloy (BPA). Ultraseal is the unique bentonite-polymer interaction formed through a proprietary blending process that produces a homogeneous alloy with improved contaminant resistance, enhanced swelling properties, and a baseline permeability one magnitude better than natural sodium bentonite. Ultraseal has a lower permeability, and it weighs 50% less than traditional bentonite products, which makes it easier to handle and install. The active, swelling properties of the bentonite-polymer alloy seals small concrete cracks and works under continuous and intermittent hydrostatic conditions.

With the durability of the needle-punched composite and low vapor transmission of the geomembrane, Voltex DS offers major construction advantages over adhered sheet membrane and fluid applied waterproofing.

PARASEAL & VOLTEX VOLCLAY TECHNICAL DATA COMPARISON

TECHNICAL DATA			
Physical Properties Method	Paraseal LG Value	Voltex Volclay Value	Test
Tensile Strength: Membrane (PSI)	4,000 PSI (27.6MPa)		ASTM-D412
Resistance to microorganisms (bacteria, fungi, mold, yeast)	unaffected	unaffected	
Elongation-ultimate failure of membrane	700%	N/A	D412 Dumbbell
Puncture Resistance	169 lbs (76.6kg)	140 lbs (63.5kg)	FTMS 101B / ASTM D 4833
Hydrostatic Pressure Resistance	150 Ft (45.6m)	231 ft. (70 m)	Paraseal - ASTM D751 Method A Footnote #1 below Voltex - ASTM D 5385 mod.
Resistance to water migration under membrane: zero leakage	150 Ft (45.6m)/Head		Footnote #2
Grab Tensile Strength		95 lbs. (422 N)	ASTM D 4632
Permeance	2.7x10 ⁻¹³ cm/sec	1 x 10 ⁻¹⁰ cm/sec.	ASTM D 5084
Installation Temperatures	-25°F to 130°F (-31.7°C to 54.4°C)		

Non-toxic	Do not ingest	Do not ingest
Low Temperature Flexibility	No effect before or after installation	Unaffected at -25°F (-32°C) ASTM D 1970
Non-staining		
Resistance to chemicals & gasses: Extremely high resistance - contact manufacturer for specific information.		
Life Expectancy: Both high density polyethylene and bentonite have life expectancy measurable in the thousands-of-years.		
FOOTNOTES FOR TECHNICAL DATA:		
1. A 1" (2.5cm) diameter hole was cut in the middle of a 3 1/2" (8.9cm) diameter sample of Paraseal LG. Sample clamped in 3" (7.6cm) diameter permeameter, 150' (45.6m) water head applied.		
2. Membrane applied to porous stone and placed in permeameter. Pressure increased to equivalent of 150 ft. (45.6m) water head.		

PROJECT CASE STUDY – SUNNYVALE TOWNE CENTER PARKING FACILITY

In Sunnyvale, California a forensic case study of waterproofing failure of Downtown Sunnyvale Garage was performed for a construction defect litigation case where a bentonite/HDPE composite system was installed. The project is the second largest below-grade structure in Northern California with six stories above-grade, four stories below-grade, two of which were below the water table. Additionally, this project was the largest below-grade waterproofing repair of its kind in California.

The structure experienced extensive leakage throughout the perimeter walls in the below-grade parking levels. The structure was built on zero lot line with shotcrete foundation walls placed against wood lagging and soldier pile retention walls. The study included performing core sampling through the 18” thick shotcrete walls, partial excavation, review of construction drawings, review of lagging installation and soil consolidation, visual observations of leaks and water testing.

The repair included drilling 5/8” diameter holes in four feet on center grid formation through the 18” shotcrete foundation wall. Several types of hydro-active grouts were injected through the holes to reach behind the foundation walls. Upon contact with water, the grout quickly expands and cures to form a water barrier behind the entire surface of the wall and under portions of the slab. The grout



5/8” Zirc Fitting drilling through 18” foundation wall



Injection grout on both sides of the bentonite paneling

injection process is designed to fill any voids behind the foundation wall. Once the injected grout reached maximum confinement, the material would continue to internally expand thus increasing the density. Upon completing the injection repairs, the project was further studied by performing core samples through the concrete to assess the effectiveness and migration of the grout injection. In many core samples, it was evident the grout migrated and expanded so quickly and with such force it encapsulated both sides of the bentonite/ HDPE composite (Questions for possible further content to be included: At what pressure was the grout injected and what was the injection flow rate? How much grout was used? What was the cost of the grout? Cost of the injection repair service? How long did it take to inject the project? Where did the injection work start – the lowest level?

CONCLUSION

The shotcrete, as opposed to traditional cast-in-place concrete was a factor in the failure, as was, lagging and soil consolidation. Lessons learned have helped the manufacturer of the sodium bentonite/HDPE composite, as the findings from this project have led to changes in their requirements for application of their products, acceptable substrates and shotcrete. Lessons will help consultants who design below grade waterproofing systems, as well as monitors that perform quality assurance roles.

Sodium Bentonite can be a very effective below-grade waterproofing system given appropriate products are specified and installed properly, soil testing is performed, and quality control processes are implemented during application. Construction techniques and materials will continue to evolve as case studies similar to the Sunnyvale Towne Center Parking Garage are documented so architects, engineers, contractors, and manufacturers can determine the post-construction effects of these systems; where and why the failures occur.