

THREE DECADES OF BUILDING INNOVATION



30TH INTERNATIONAL CONVENTION & TRADE SHOW

March 5 - 10, 2015

San Antonio, Texas

Fenestrations

Presented By

Petersen Lambert, PE

Allana Buick & Bers, Inc.



Copyright Materials

**This presentation is protected by US and
International copyright laws.**

**Reproduction, distribution, display and use of the
presentation without written permission of the
speaker is prohibited.**

Allana Buick & Bers, Inc. 2020



ALLANA BUICK & BERS

Making Buildings Perform Better



Best Practice

Allana Buick & Bers, Inc. (ABBAE) is a Registered Provider with the American Institute of Architects Continuing Education Systems. Credit earned on completion of this program will be reported to CES Records for AIA members. Certificates of completion for non-AIA members are available on request.

This program is registered with the AIA/CES for continuing professional education. As such, it does not include content that may be deemed or construed to be an approval or endorsement by the AIA of any material of construction or any method or manner of handling, using, distributing, or dealing in any material or product. Questions related to specific materials, methods, and services will be addressed at the conclusion of this presentation.



Karim P. Allana, PE, RRC, RWC

- **Education:** B.S., Civil Engineering, Santa Clara University
- **Registration:** P.E., Civil Engineering, California, Washington, Nevada, and Hawaii
- **Certification:** Registered Roof Consultant (RRC), Roof Consultants Institute, and Registered Waterproofing Consultant (RWC)
- **Overview:**
 - CEO and Senior Principal at Allana Buick & Bers.
 - Former Turner Construction Employee (Project Engineering and Superintendent)
 - Over 37 years experience providing superior technical standards in all aspects of building technology and energy efficiency.
 - Principal consultant in forensic investigations of building assemblies, failure analysis, evaluation and design of building infrastructure and building envelope evaluation and design.
 - Expert in all aspects of building envelope technology.
 - Completed numerous new construction, addition, rehabilitation, remodel and modernization projects for public and private sector clients.
 - Specialization in siding, roofing, cement plaster, wood, water intrusion damage, window assemblies, storefronts, below grade waterproofing, energy efficiency, solar engineering and complex building envelope and mechanical assemblies.



ABBAE Firm Overview

- **Allana Buick & Bers (ABBAE) is an Architectural Engineering firm specializing in Building Envelope Systems**
- **ABBAE is one of the 5 largest building envelope consultants in the country**
- **ABBAE has over 33 years of experience & over 12,500 projects**
- **ABBAE is also a leading Forensic Defect firm with hundreds of forensic projects (litigation)**
- **Locations – 16 offices across California, Nevada, North Carolina, Oklahoma, Oregon, Texas, Virginia, Washington, Colorado and Hawaii**



Staff & In-House Expertise

- Licensed Professional Engineers – Civil, Structural, and Mechanical
- Registered Architects
- Building Enclosure Commissioning Process Providers (BECxPs)
- Registered Building Envelope Consultant (RBEC)
- Registered Roofing Consultants (RRCs)
- Registered Waterproofing Consultants (RWCs)
- Registered Exterior Wall Consultant (REWCs)
- Registered Roof Observers (RROs)
- Certified Exterior Insulation and Finish System (EIFS) inspectors
- Curtain Wall Specialists
- ICC Certified Building Inspectors
- Quality Assurance Monitors
- Water Testing Experts
- Leak Investigation and Diagnosis Experts
- Infrared Imaging and Nuclear Moisture Scanning Experts



ABBAE Building Expertise

- **Building Envelope Systems**
 - **Roofing Systems**
 - High-Slope/Low-Slope Roofs
 - Green/Garden Roofs
 - Drainage Systems
 - Pedestrian Plazas
 - **Exterior Wall Systems**
 - Wall Cladding /Siding/GFRC/pre-cast
 - EIFS/cement plaster/stucco
 - Sheet Metal Flashings
 - **Windows and Glazing Systems**
 - Punched Windows
 - Curtain Wall/Window Wall Systems
 - Sliding Glass Doors
 - Skylights
- **Building Envelope Systems (cont'd)**
 - **Roofing & Waterproofing Systems**
 - Deck/Balcony/Lanai Waterproofing
 - Podium Waterproofing
 - Pool/Spa Deck Waterproofing
 - Above-Grade/Below-Grade Waterproofing
 - All types of low and steep sloped roofing
 - **Commissioning BECx**
 - OPR/BOD/Commissioning Plan
 - **Mechanical/HVAC Systems**
 - HVAC design
 - Plumbing systems
 - Commissioning and testing



ABBAE Core Services

- **Consulting and third-party peer review services**
- **Engineer of record for building envelope systems**
- **Contract administration services**
- **Inspection services (usually direct with owner)**
- **Air and water performance testing**
- **Mock-up design, observation, and testing**
- **Building assessments and forensic investigations**
- **Litigation support and expert witness services**
- **Educational seminars with AIA credits**



Objectives

- **Review Frame Types**
- **Pros and Cons of Vinyl Windows**
- **Technical Aspects of Vinyl Windows**
 - Design Considerations
 - External Glazing Tape vs. Internal Glazing Tape
- **Understanding Why Vinyl Windows Fail**
 - Glazing Tape
 - IGU
 - Frame
 - Reinforcement
 - Joinery (Mulled and Coped Joints)
- **Case Study**
- **Conclusions**



Windows Are Important

- **Windows are among the most complex components in a building.**
- **At several hundred dollars to thousands of dollars apiece, windows are also among the most expensive.**
- **In addition to the important architectural and aesthetic contribution they make, windows have very far-reaching energy consequences.**
- **The number of windows, total area, and orientation to the sun can make or break the energy efficiency of a high-performance building.**



Vinyl Windows – Are They Reliable?

- **The Federal Trade Commission recently issued a publication that endorsed vinyl-frame windows because they “insulate well and don’t need painting.”**
- **While Vinyl Windows offer many energy efficiency and maintenance benefits... You must ask:**
 - As a construction professional am I opening myself to liability specifying vinyl windows?
 - Do the vinyl windows actually perform as advertised?
 - Do they provide the Owner with a product that has longevity and is adverse to defects?



Window Considerations

- ✓ **Type of Construction (height, use, etc)**
- ✓ **Acoustical**
- ✓ **Thermal Resistance**
- ✓ **Orientation**
- ✓ **Air Infiltration**
- ✓ **Water Resistance**
- ✓ **Condensation Resistance**
- ✓ **Wind Resistance**
- ✓ **Glazing (Size and Type)**
- ✓ **Operation (31 types defined by NAFS)**
- ✓ **Sizing**
- ✓ **Aesthetic**
- ✓ **Economics**
- ✓ **Hardware Selection**



But don't worry...
There is help...



A Ridiculous Amount to Know About Windows

• A list of ASTM Standard Test Methods Relevant to Building Envelope Windows

ASTM C 162 Standard Terminology of Glass and Glass Products
ASTM C 509 Standard Specification for Elastomeric Cellular Preformed Gasket and Sealing Material
ASTM C 510 Standard Test Method for Staining and Color Change of Single- or Multicomponent Joint Sealants
ASTM C 542 Standard Specification for Lock-Strip Gaskets
ASTM C 716 Standard Specification for Installing Lock-Strip Gaskets and Infill Glazing Materials
ASTM C 717 Standard Terminology of Building Seals and Sealants
ASTM C 793 Standard Test Method for the Effects of Accelerated Weathering on Elastomeric Joint Sealants
ASTM C 794 Standard Test Method for Adhesion-in-Peel of Elastomeric Joint Sealants
ASTM C 864 Standard Specification for Dense Elastomeric Compression Seal Gaskets, Setting Blocks, and Spacers
ASTM C 920 Standard Specification for Elastomeric Joint Sealants
ASTM C 964 Standard Guide for Lock-Strip Gasket Glazing
ASTM C 1036 Standard Specification for Flat Glass
ASTM C 1048 Standard Specification for Heat-Treated Flat Glass—Kind HS, Kind FT Coated and Uncoated
ASTM C 1087 Standard Test Method for Determining Compatibility of Liquid-Applied Sealants with Accessories Used in Structural Glazing Systems
ASTM C 1115 Standard Specification for Dense Elastomeric Silicone Rubber Gaskets and Accessories
ASTM C 1135 Standard Test Method for Determining Tensile Adhesion Properties of Structural Sealants
ASTM C 1172 Standard Specification for Laminated Architectural Flat Glass
ASTM C 1184 Standard Specification for Structural Silicone Sealants
ASTM C 1193 Standard Guide for Use of Joint Sealants
ASTM C 1249 Standard Guide for Secondary Seal for Sealed Insulating Glass Units for Structural Sealant Glazing Applications
ASTM C 1256 Standard Practice for Interpreting Glass Fracture Features
ASTM C 1265 Standard Test Method for Determining the Tensile Properties of an Insulating Glass Edge Seal for Structural Glazing Applications
ASTM C 1279 Standard Test Method for Non-Destructive Photoelastic Measurement of Edge and Surface Stresses in Annealed, Heat-Strengthened, and Fully Tempered Flat Glass
ASTM C 1281 Standard Specification for Preformed Tape Sealants for Glazing Applications
ASTM C 1294 Standard Test Method for Compatibility of Insulating Glass Edge Sealants with Liquid-Applied Glazing Materials
ASTM C 1349 Standard Specification for Architectural Flat Glass Clad Polycarbonate
ASTM C 1369 Standard Specification for Secondary Edge Sealants for Structurally Glazed Insulating Glass Units
ASTM C 1375 Standard Guide for Substrates Used in Testing Building Seals and Sealants
ASTM C 1376 Standard Specification for Pyrolytic and Vacuum Deposition Coatings on Flat Glass
ASTM C 1377 Standard Test Method for Calibration of Surface/Stress Measuring Devices
ASTM C 1392 Standard Guide for Evaluating Failure of Structural Sealant Glazing
ASTM C 1394 Standard Guide for In-Situ Structural Silicone Glazing Evaluation
ASTM C 1399 Standard Test Method for Cyclic Movement and Measuring the Minimum and Maximum Joint Widths of Architectural Joint Systems
ASTM C 1401 Standard Guide for Structural Sealant Glazing
ASTM C 1422 Standard Specification for Chemically Strengthened Flat Glass
ASTM C 1464 Standard Specification for Bent Glass
ASTM C 1472 Standard Guide for Calculating Movement and Other Effects When Establishing Sealant Joint Width

ASTM C 1487 Standard Guide for Remedying Structural Silicone Glazing
ASTM C 1503 Standard Specification for Silvered Flat Glass Mirror
ASTM C 1564 Standard Guide for Use of Silicone Sealants for Protective Glazing Systems
ASTM C 1678-07 Standard Practice for Fractographic Analysis
ASTM E 90 Standard Test Method for Laboratory Measurement of Airborne Sound Transmission Loss of Building Partitions and Elements
ASTM E 119 Standard Test Methods for Fire Tests of Building Construction and Materials
ASTM E 283 Standard Test Method for Determining Rate of Air Leakage Through Exterior Windows, Curtain Walls, and Doors Under Specified Pressure Differences Across the Specimen
ASTM E 330 Standard Test Method for Structural Performance of Exterior Windows, Doors, Skylights and Curtain Walls by Uniform Static Air Pressure Difference
ASTM E 331 Standard Test Method for Water Penetration of Exterior Windows, Skylights, Doors and Curtain Walls by Uniform Static Air Pressure Difference
ASTM E 336 Standard Test Method for Measurement of Airborne Sound Insulation in Buildings
ASTM E 413 Classification for Rating Sound Insulation
ASTM E 488 Standard Test Methods for Strength of Anchors in Concrete and Masonry Elements
ASTM E 514 Standard Test Method for Water Penetration and Leakage Through Masonry
ASTM E 546 Standard Test Method for Frost Point of Sealed Insulating Glass Units
ASTM E 547 Standard Test Method for Water Penetration of Exterior Windows, Skylights, Doors and Curtain Walls by Cyclic Static Air Pressure Differential
ASTM E 576 Standard Test Method for Frost Point of Sealed Insulating Glass Units in the Vertical Position
ASTM E 631 Standard Terminology of Building Constructions
ASTM E 754 Standard Test Method for Pullout Resistance of Ties and Anchors Embedded in Masonry Mortar Joints
ASTM E 773 Standard Test Method for Accelerated Weathering of Sealed Insulating Glass Units
ASTM E 774 Standard Specification for Classification of the Durability of Sealed Insulating Glass Units
ASTM E 783 Standard Method for Field Measurement of Air Leakage Through Installed Exterior Windows and Doors
ASTM E 894 Standard Test Method for Anchorage of Permanent Metal Railing Systems and Rails for Buildings
ASTM E 966 Standard Guide for Field Measurement of Airborne Sound Insulation of Building Facades and Facade Elements
ASTM E 987 Standard Test Methods for Deglazing Force of Fenestration Products
ASTM E 997 Standard Test Method for Structural Performance of Glass in Exterior Windows, Curtain Walls, and Doors Under the Influence of Uniform Static Loads by Destructive Methods
ASTM E 998 Standard Test Method for Structural Performance of Glass in Windows, Curtain Walls, and Doors Under the Influence of Uniform Static Loads by Nondestructive Method
ASTM E 1105 Standard Test Method for Field Determination of Water Penetration of Installed Exterior Windows, Skylights, Doors and Curtain Walls by Uniform or Cyclic Static Air Pressure Difference
ASTM E 1233 Standard Test Method for Structural Performance of Exterior Windows, Doors, Skylights, and Curtain Walls by Cyclic Air Pressure Differential
ASTM E 1300 Standard Practice for Determining Load Resistance of Glass in Buildings
ASTM E 1332 Standard Classification for Determination of Outdoor-Indoor Transmission Class
ASTM E 1423 Standard Practice for Determining the Steady State Thermal

Transmittance of Fenestration Systems
ASTM E 1424 Standard Test Method for Determining the Rate of Air Leakage Through Exterior Windows, Curtain Walls, and Doors Under Specified Pressure and Temperature Differences Across the Specimen
ASTM E 1425 Standard Practice for Determining the Acoustical Performance of Exterior Windows and Doors
ASTM E 1825 Standard Guide for Evaluation of Exterior Building Wall Materials, Products, and Systems
ASTM E 1886 Standard Test Method for Performance of Exterior Windows, Curtain Walls, Doors, and Impact Protective Systems Impacted by Missiles and Exposed to Cyclic Pressure Differentials
ASTM E 1996 Standard Specification for Performance of Exterior Windows, Curtain Walls, Doors and Impact Protective Systems Impacted by Windborne Debris in Hurricanes
ASTM E 2010 Standard Test Method for Positive Pressure Fire Tests of Window Assemblies
ASTM E 2074 Standard Test Method for Fire Tests of Door Assemblies, Including Positive Pressure Testing of Side-Hinged and Pivoted Swinging Door Assemblies
ASTM E 2094 Standard Practice for Evaluating the Service Life of Chromogenic Glazings
ASTM E 2099 Standard Practice for the Specification and Evaluation of Pre-Construction Laboratory Mockups of Exterior Wall Systems
ASTM E 2112 Standard Practice for Installation of Exterior Windows, Doors and Skylights
ASTM E 2128 Standard Guide for Evaluating Water Leakage of Building Walls
ASTM E 2141 Standard Test Methods for Assessing the Durability of Absorptive Electrochromic Coatings on Sealed Insulating Glass Units
ASTM E 2188 Standard Test Method for Insulating Glass Unit Performance
ASTM E 2189 Standard Test Method for Testing Resistance to Fogging in Insulating Glass Units
ASTM E 2190 Standard Specification for Insulating Glass Unit Performance and Evaluation
ASTM E 2268 Standard Test Method for Water Penetration of Exterior Windows, Skylights, and Doors by Rapid Pulsed Air Pressure Difference
ASTM E 2269 Standard Test Method for Determining Argon Concentration in Sealed Insulating Glass Units using Gas Chromatography
ASTM E 2270 Standard Practice for Periodic Inspection of Building Facades for Unsafe Conditions
ASTM E 2319 Standard Test Method for Determining Air Flow Through the Face and Sides of Exterior Windows, Curtain Walls, and Doors Under Specified Pressure Differences Across the Specimen
ASTM E 2353 Standard Test Method for the Performance of Glass in Permanent Glass Railing Systems, Guards and Balusters
ASTM E 2395 Standard Specification for Voluntary Security Performance of Windows and Door Assemblies with and without Glazing Impact
ASTM F 1233 Standard Test Method for Security Glazing Materials and Systems
ASTM F 1641 Standard Test Method for Measuring Penetration Resistance of Security Glazing Using a Pendulum Impactor
ASTM F 1642 Standard Test Method for Glazing and Glazing Systems Subject to Airblast Loadings
ASTM F 1915 Standard Test Methods for Glazing for Detention Facilities
ASTM F 2248 Standard Practice for Specifying an Equivalent 3-Second Duration Design Loading for Blast Resistant Glazing Fabricated with Laminated Glass
ASTM STP 1054 Technology of Glazing Systems
ASTM STP 552 C. J. Parise, "Window and Wall Testing," 1974.
ASTM STP 606 J. A. Dallen & P. Paulus, "Lock-Strip Glazing Gaskets," 1976



Tip of The Iceberg in Window Knowledge

- **A list of AAMA Standards Pertaining to Windows**

AAMA Aluminum Curtain Wall Design Guide Manual

AAMA/NWWDA 101/I.S.2 Voluntary Specifications for Aluminum, Vinyl (PVC) and Wood Windows and Glass Doors

AAMA 501 Methods of Test for Exterior Walls

AAMA 501.1 Methods of Tests for Exterior Walls – Dynamic Test (laboratory)

AAMA 501.2 Methods of Tests for Exterior Walls – Hose Test (field)

AAMA 501.4 & 501.6 Recommended Static Test Method for Evaluating Curtain Wall and Storefront Systems Subjected to Seismic and Wind Induced Interstory Drifts and Recommended Dynamic Test Method For Determining the Seismic Drift Causing Glass Fallout from a Wall System

AAMA 501.5 Test Method for Thermal Cycling of Exterior Walls

AAMA 503 Voluntary Specification for Field Testing of Metal Storefronts, Curtain Walls and Sloped Glazing Systems

AAMA 507 Standard Practice for Determining the Thermal Performance Characteristics of Fenestration Systems Installed in Commercial Buildings

AAMA 510 Voluntary Guide Specification for Blast

Hazard Mitigation for Fenestration Systems

AAMA 609 Cleaning and Maintenance Guide

AAMA 610 Cleaning and Maintenance Guide

AAMA 611 Voluntary Specification for Anodized Architectural Aluminum

AAMA 800 Series Series of publications on sealant specifications

AAMA 850 Fenestration Sealants Guide Manual

AAMA 1503 Voluntary Standards for Thermal Transmittance and Performance

AAMA 1503.1 Voluntary Test Method for Thermal Transmittance and Condensation Resistance of Windows, Doors and Glazed Wall Sections

AAMA 1504 Voluntary Standard for Thermal

Performance of Windows, Doors and Glazed Walls

AAMA 1600 Voluntary Specification for Skylights

AAMA 2604 Voluntary Specification for High Performance Organic Coatings on Aluminum Extrusions and Panels

AAMA AFPA Anodic Finishes/Painted Aluminum
AAMA CW-DG-1 Aluminum Curtain Wall Design Guide Manual

AAMA CW-RS-1 Rain Screen Principle and Pressure Equalization

AAMA CW-11 Design Wind Loads and Boundary

Layer Wind Tunnel Testing

AAMA CW-12 Structural Properties of Glass

AAMA CW-13 Structural Sealant Glazing Systems

AAMA CWG-1 Installation of Aluminum Curtain Walls

AAMA FSCOM-1 Fire Safety in High Rise Curtain Walls

AAMA GAG-1 Glass and Glazing

AAMA GDSG-1 Glass Design for Sloped Glazing

AAMA JS-1 Joint Sealants

AAMA MCWM-1 Metal Curtain Wall Manual

AAMA SDGS-1 Structural Design Guidelines for Aluminum Framed Skylights

AAMA SFM-1 Aluminum Store Front and Entrance Manual

AAMA SHDG-2 The Skylight Handbook Design Guidelines

AAMA TIR-A7 Sloped Glazing Guidelines

AAMA TIR-A9 Metal Curtain Wall Fasteners

AAMA TIR-A11 Maximum Allowable Deflection of Framing Systems for Building Cladding Components at Design Wind Loads

AAMA TSGG Two-Sided Structural Glazing Guidelines for Aluminum Framed Skylights

AAMA WSG.1 Window Selection Guide

- **And let's not forget NFRC, ANSI, ASCE, CPSC, NFPA, UL, and GANA Standards**



Window Frame Considerations

The window frames do more than hold the glass in place and allow the window to open and close.

- ✓ They are an important part of a window's overall thermal performance.**
- ✓ The type of frame helps dictate how much maintenance the window will need over its lifetime.**
- ✓ Equally important to the thermal performance of the frame is the water resistance performance.**

Frame materials include:

- Wood**
- Aluminum**
- Vinyl**
- Fiberglass**
- Both vinyl- and aluminum-clad substrates**



Window Frame Types

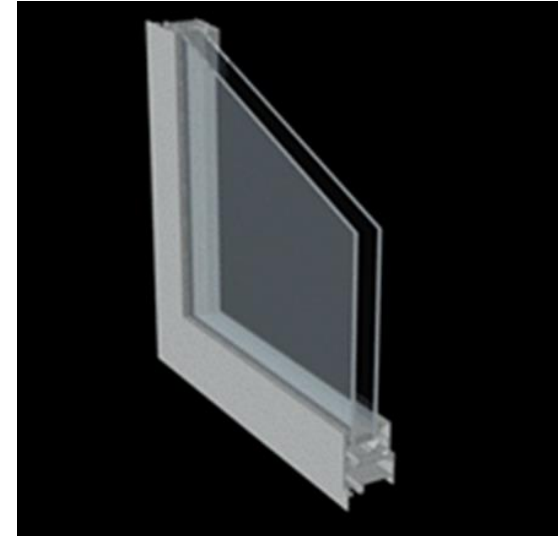
- **Wood**
 - The traditional window frame material
 - Wood frames are high maintenance, they require sanding and staining, and the outer frame may require re-finishing every few years.
- **Clad Wood**
 - Clad the exterior face of the frame with either vinyl or aluminum, creating a permanent weather-resistant surface.



Window Frame Types

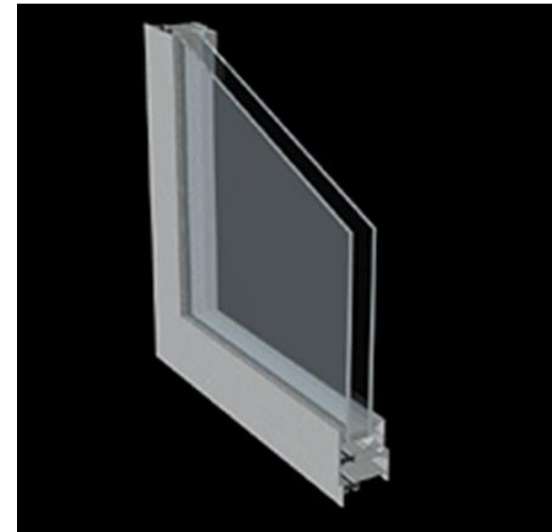
- **Aluminum**

- Aluminum window frames are light, strong, durable but with high thermal conductance. They readily conduct heat, greatly raising the overall U-factor of a window unit.



- **Aluminum with Thermal Break**

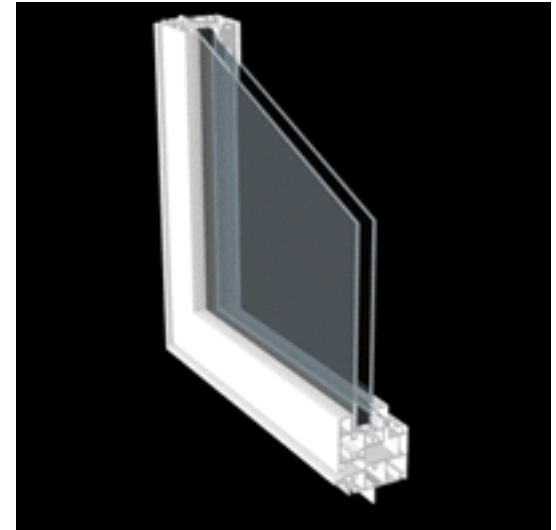
- The most common solution to the heat conduction problem of aluminum frames is to provide a thermal break by splitting the frame components into interior and exterior pieces and use a less conductive material to join them.



Window Frame Types

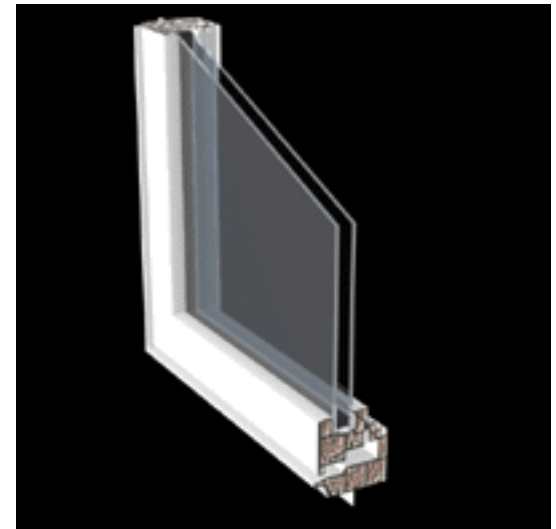
- **Vinyl**

- Vinyl does not conduct heat very well and is therefore considered a good thermal insulator.
- Vinyl comes in different wood grain finishes and does not require painting or finishing.



- **Insulated Vinyl**

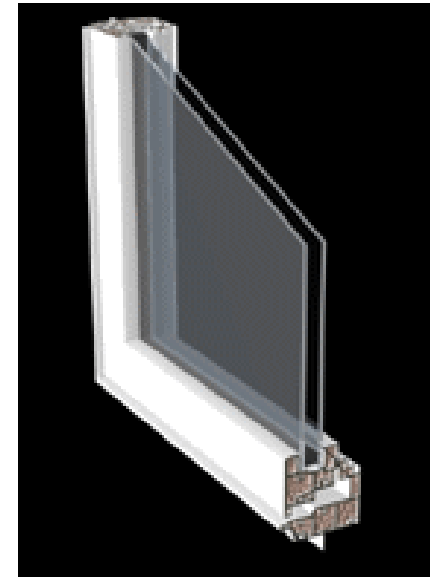
- In insulated vinyl frames, the non-draining hollow cavities of the frame are filled with insulation making them thermally superior to standard vinyl and wood frames. Usually these high performance frames are used with high performance glazings.



Window Frame Types

- **Fiberglass**

- Generally the more expensive option. They don't need to be painted or caulked often, and they have high insulation values.
- Fiberglass expands and contracts almost the same as window glass in extreme temperature changes, which contributes to the longevity of the seals around the glass.



- **Hybrid**

- Use of two or more frame materials

- **Composite**

- Very stable, and have the same or better structural and thermal properties as conventional wood, with better moisture resistance and more decay resistance.



Configuration Types

AAMA/WDMA/CSA 101/I.S. 2/A440-05 Product Type Designation System			
TYPE CODE	WINDOW OR GLASS DOOR TYPE	TYPE CODE	WINDOW OR GLASS DOOR TYPE
Sliding Seal Window Products		Specialty Window Products	
H	Single/Double/Triple Hung	BW	Basement Window
HS	Horizontal Sliding	HE	Hinged Egress (rescue window)
VS	Vertical Sliding	GH	Greenhouse
Compression Seal Window Products		J	Jalousie
AP	Awning, Hopper or Projected	JA	Jal-Awning
C	Casement	TA	Tropical Awning
VP	Vertically Pivoted	TR	Transom
HP	Horizontally Pivoted	SP	Specialty Products*
SHW	Side-Hinged Inswinging	Door Products	
TH	Top-Hinged	ATD	Architectural Terrace Door
Fixed Window Products		FD	Fixed Door
FW	Fixed	SHD	Side-Hinged Door
Unit Skylight Products		LW SHD	Limited Water Side-Hinged Door
SKG	Skylights/Glass Glazed	SLT	Side lite
SKP	Skylights/Plastic Glazed	SD	Sliding Door
RW	Roof Window	DASHD	Dual Action Side Hinged Door
Dual Action Window Products		LW DASHD	Limited Water Dual Action Side-Hinged Door
DAW	Dual Action Window		

(NOTE: The products in blue are new or revised in the 2005 standard.)

* The Specialty Products category was established to clarify how performance is to be measured for size and shape variations of other product types (e.g., half-rounds, trapezoids and other configurations) and is congruent with current NFRC terminology. Note that this does not replace the "Specialty Window Products" grouping defined in the 1997 standard, where the existing categories for basement, greenhouse, jalousie, etc. windows are still applicable.



Objectives

- ~~Review Frame Types~~
- **Pros and Cons of Vinyl Windows**
- **Technical Aspects of Vinyl Windows**
 - Design Considerations
 - External Glazing Tape vs. Internal Glazing Tape
- **Understanding Why Vinyl Windows Fail**
 - Glazing Tape
 - IGU
 - Frame
 - Reinforcement
 - Joinery (Mulled and Coped Joints)
- **Case Study**
- **Conclusions**



Facts About Vinyl Windows - Pros

- **Pros:**

- Vinyl windows and doors are energy efficient during both the manufacturing and use phases of their lifecycle.
- Vinyl products have low embodied energy – meaning the amount of energy required to convert the raw material into an end product is lower than most alternatives.
- Great condensation resistance. The material is less conductive than aluminum.
- Can reduce noise transmission.
- Flexible and varied design options.



Facts About Vinyl Windows - Cons

- **Cons:**
 - Manufacturing techniques and levels of quality standards vary greatly.
 - Many mass produced vinyl windows are made with lower grade materials.
 - PVC is not as rigid as wood or aluminum and thus is only effective for relatively small windows. (They can be fitted with internal metal stiffeners.) Vinyl windows will also require thicker frames.
 - PVC is a little tricky for sealant adhesion – sometimes caulking materials doesn't stick to it. When working with any substrate, and especially PVC, you must do adhesion tests before applying sealants.



Facts About Vinyl Windows - Cons

- **Cons:**

- PVC is a thermoplastic with a relatively low melting point, about 212°F. It can begin to soften 149°F and if it heats up too much, it can bend and “take a set”.
- Dark-colored vinyl if installed in a location where it receives reflected light from a window, can reach 219°F.
- PVC has a greater coefficient of thermal expansion than wood, aluminum, or glass. This means it shrinks and grows more with temperature changes. Glazing sealants can shear because the PVC is moving against the more stable glass which can result in leaks around the glass.
- Complex frame geometries make for challenging coped joinery.



Objectives

- ~~Review Frame Types~~
- ~~Pros and Cons of Vinyl Windows~~
- **Technical Aspects of Vinyl Windows**
 - Design Considerations
 - External Glazing Tape vs. Internal Glazing Tape
- **Understanding Why Vinyl Windows Fail**
 - Glazing Tape
 - IGU
 - Frame
 - Reinforcement
 - Joinery (Mulled and Coped Joints)
- **Case Study**
- **Conclusions**



Window Design Considerations

- ✓ **Type of Construction (height, use, etc)**
- ✓ **Acoustical**
- ✓ **Thermal Resistance**
- ✓ **Orientation**
- ✓ **Air Infiltration**
- ✓ **Water Resistance**
- ✓ **Condensation Resistance**
- ✓ **Wind Resistance**
- ✓ **Glazing (Size and Type)**
- ✓ **Operation (31 types defined by NAFS)**
- ✓ **Sizing**
- ✓ **Aesthetic**
- ✓ **Economics**
- ✓ **Hardware Selection**



Technical Aspects of Vinyl Windows

- **Design Pressures**
- **External Glazed vs. Internal Glazed**

These are commonly misunderstood!



Design Pressures

Class	Design Pressure		Structural (150% of DP)		Water Resistance Test Pressure (15% of DP)	
	PSF	MPH	PSF	MPH	PSF	MPH
R	15	77	22.5	94	2.9	34
LC	25	99	37.5	121	3.75	38
HC	30	108	45	133	4.5	42
AW	40	125	60	153	8	56

R15 - WRTP is a minimum 2.9 PSF

AW - WRTP is 20% of DP

Maximum WRTP per AAMA is 15 PSF

These are “gateway” minimum values.

A designer can specify a higher WRTP requirement.

Example: LC25 with a WPTP requirement of 4.5 PSF



How to Read the Label

R – PG 15 – (63x44) – Type HS

A **B** **C** **D**

PRODUCT KEY

A = Performance Class: R

B = Performance Grade: Design Pressure = 15 psf

C = Maximum Size Tested: Width x Height (63x44)

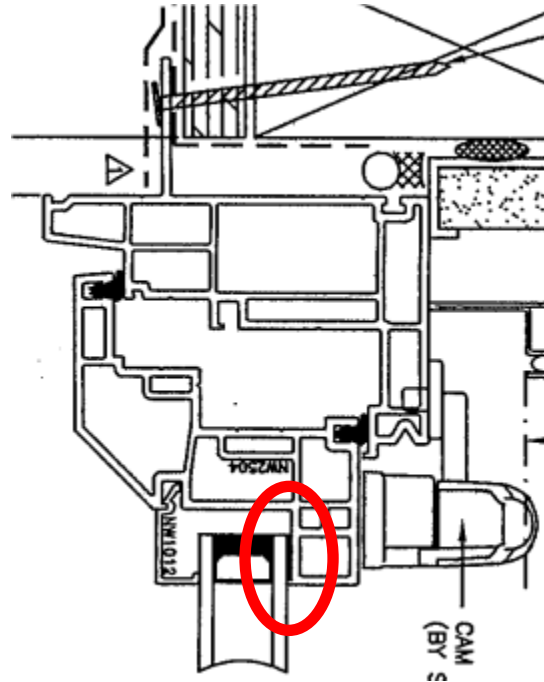
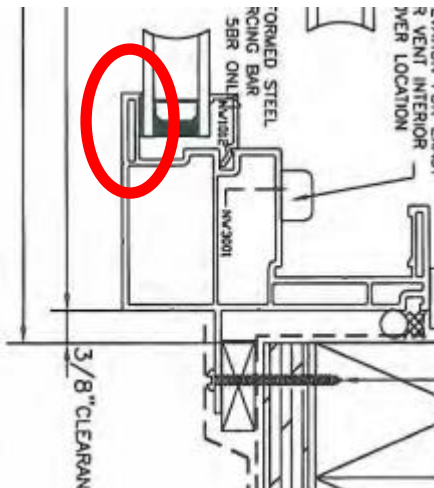
D = Product Type: Horizontal Siding Window (HS)



Glazing Tape – Interior vs. Exterior Glazed

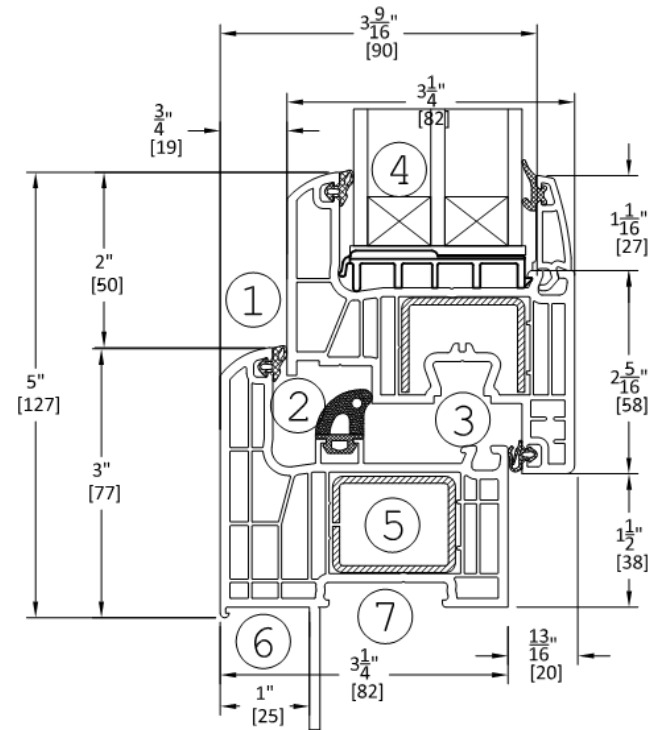
- Often the windows are internally glazed, exposing the foam gaskets to UV and water exposure

Internally Glazed



Externally Glazed

Gasket Glazed



Objectives

- **~~Review Frame Types~~**
- **~~Pros and Cons of Vinyl Windows~~**
- **~~Technical Aspects of Vinyl Windows~~**
 - ~~Design Considerations~~
 - ~~External Glazing Tape vs. Internal Glazing Tape~~
- **Understanding Why Vinyl Windows Fail**
 - Glazing Tape
 - IGU
 - Frame
 - Reinforcement
 - Joinery (Mulled and Coped Joints)
- **Case Study**
- **Conclusions**



Understanding Why Vinyl Windows Fail

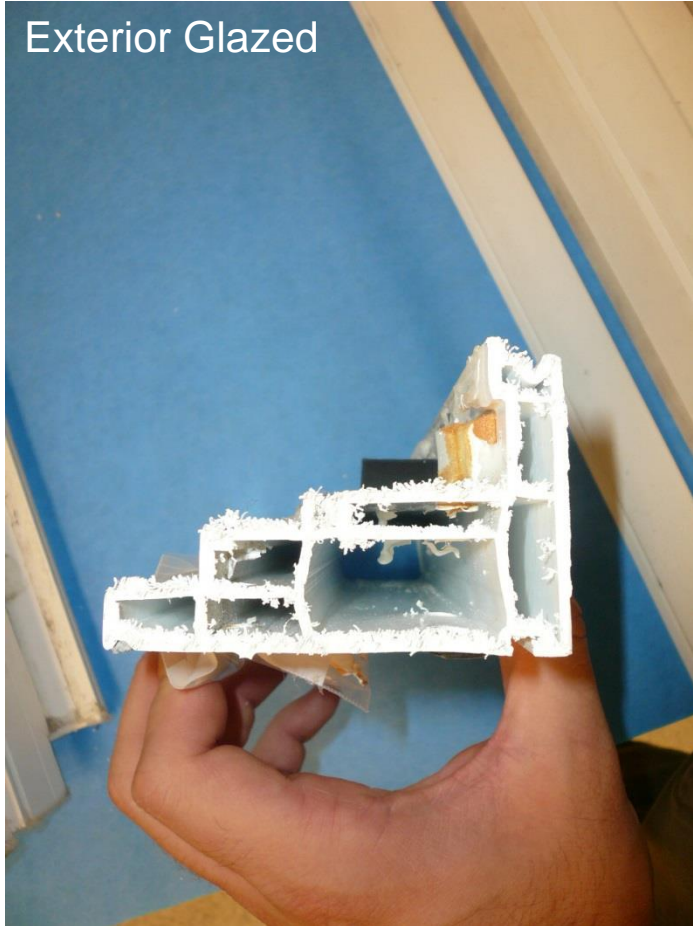
- **Glazing Tape**
- **IGU**
- **Frame Issues**
- **Reinforcement**
- **Joinery**
 - **Mulled Joints**
 - **Coped Joints**



Glazing Tape

- Often the windows are internally glazed, exposing the foam gaskets to UV and water exposure
- Glazing tape needs to adhere a naturally flexible substrate.

Exterior Glazed

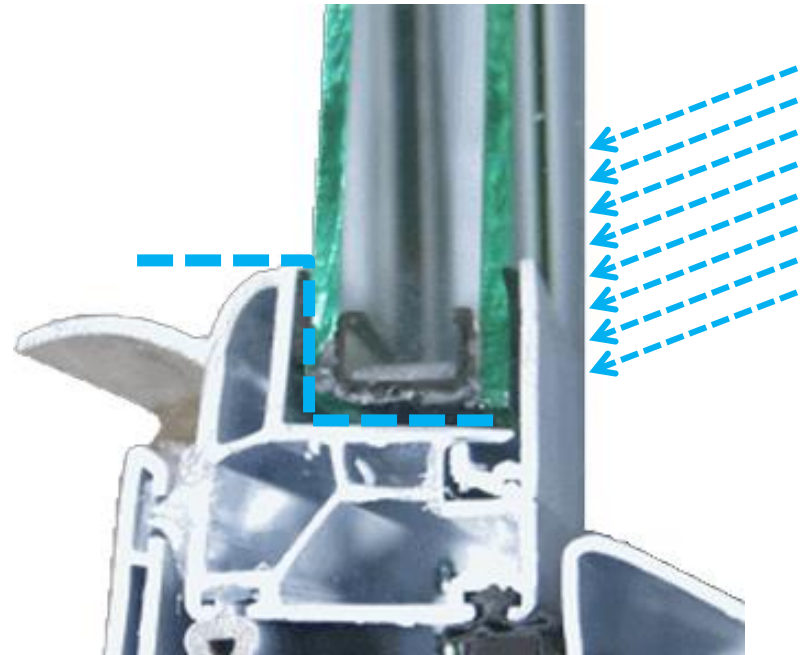


Interior Glazed



Water Leaks Through Glazing??

- Thermal movement of PVC is up to 7 times that of glass.
- As the temperature changes, the PVC can slide against the glass and puts stress and wear on the glazing sealant.
- The sealant might be only 1/16" thick and eventually is sheared.
- In some cases a vinyl window sash can overflow with just a light spray.



Glazing Tape Issues



ABB2872-18241



Glazing Tape Issues



ABB2872-22958



Insulated Glass (IGU) Seal Failure

- When too much moisture moves through the seal and into the space the desiccant will eventually lose its ability to absorb any more moisture.
- The result of the failure of the seal to keep out excess moisture is that condensation may occur causing the unit to have a fogged appearance.
- Premature failure of sealed units is usually caused by:
 - Poor design of the unit so that it will not pass the standard ASTM tests recommended by the Sealed Insulated Glass Manufacturers Association (SIGMA)
 - Poor workmanship on an individual unit during fabrication
 - Poor frame design which will allow the unit to sit in a high moisture environment



Frame Related Issues

- Older vinyl windows without fused/welded corners are prone to water leaks (screw-spline joinery is prone to leak)
- Screw-spline joinery in some cases not conducive to effective sealing and sealant adhesion
- Welded frame joints can break.

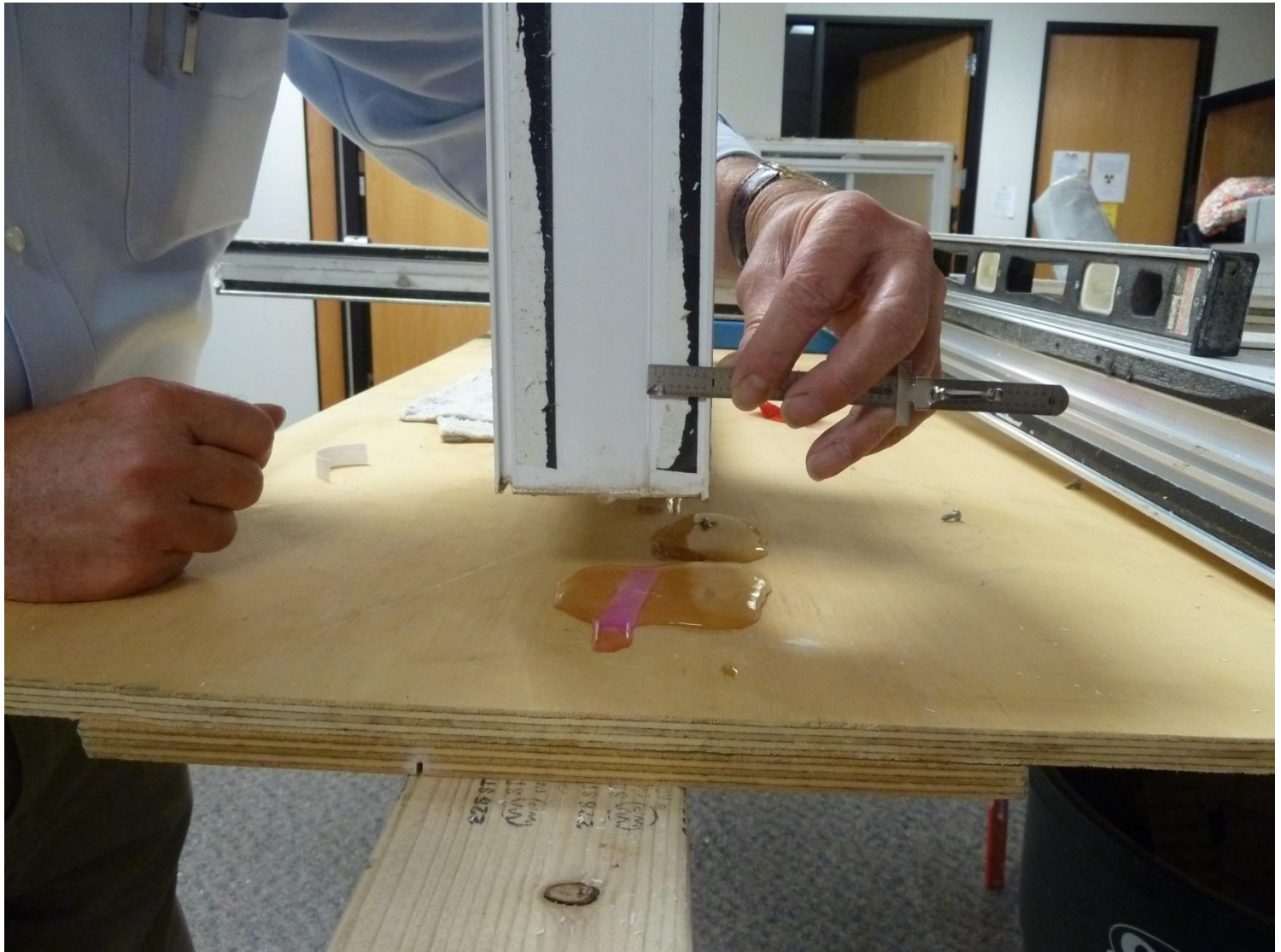


Sill Track Test

- A fixed mullion is not flexible and can crack from movement during transport or due to thermal changes



Frame Failure



Reinforcement Issues

- Reinforcement provides support for glazing and support from wind forces.
- Must have continuous load path.

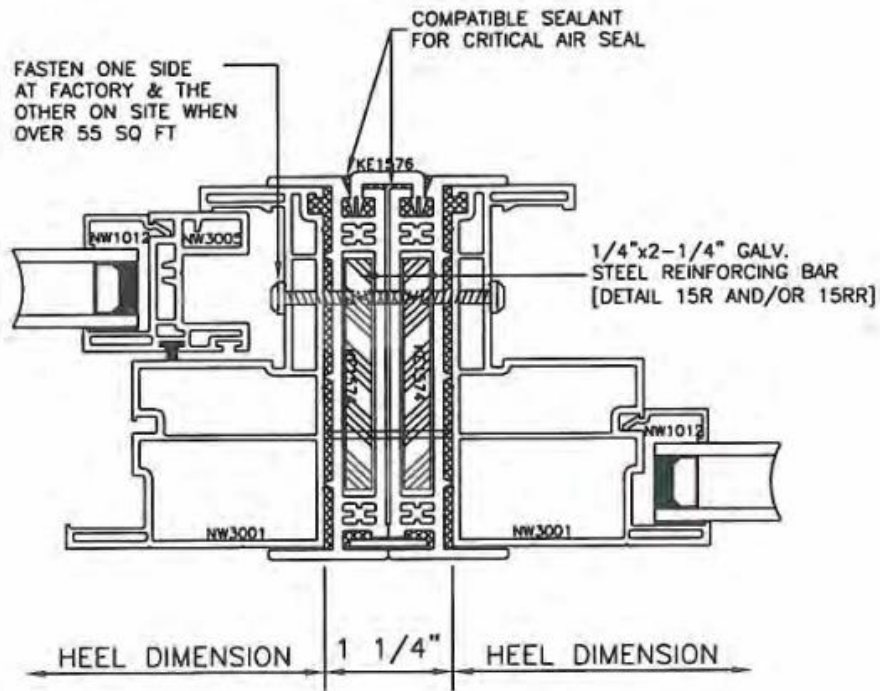


Reinforcement Issues



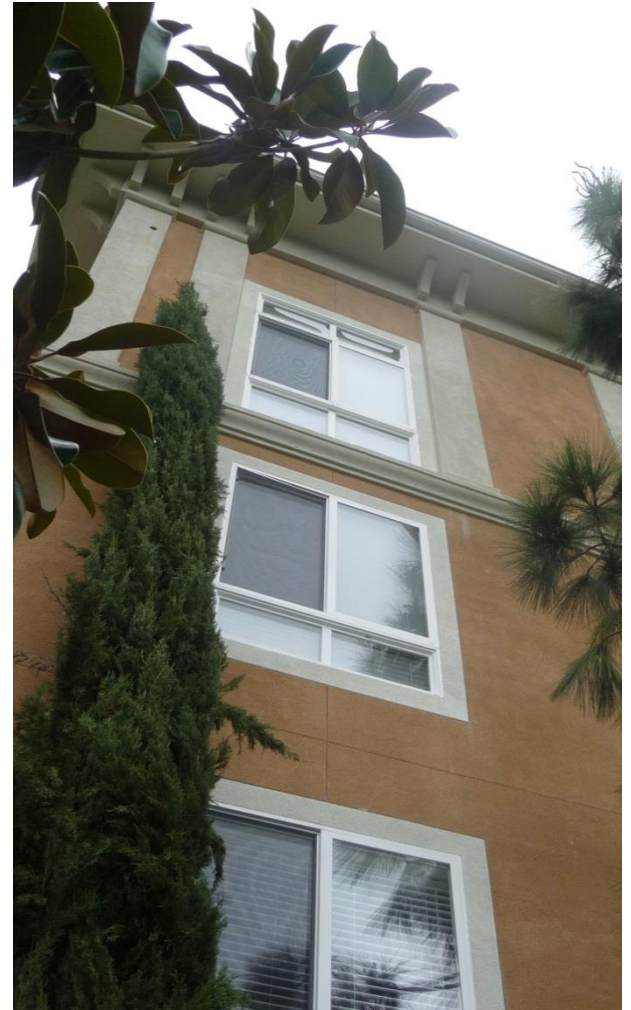
Mulled Window Issues

When 2 to 3 windows are joined together



Mulled Window Issues

- When 2 to 3 windows are joined together



Mulled Window Issues

- Vertical Sliders over Fixed
- What is DP of this assembly?



Water Leaks Through Muller Joints

- Mullions and capping trim attachments generally must be continuously sealed to the window on the exterior.
- If screws are driven into the window from the interior – this can produce leaks and should be avoided.
- If sealant between the aluminum mullion is not applied, leaks usually occur.

Aluminum stiffener. Note an absence of sealant between the aluminum and the windows.



Mulled windows separated.

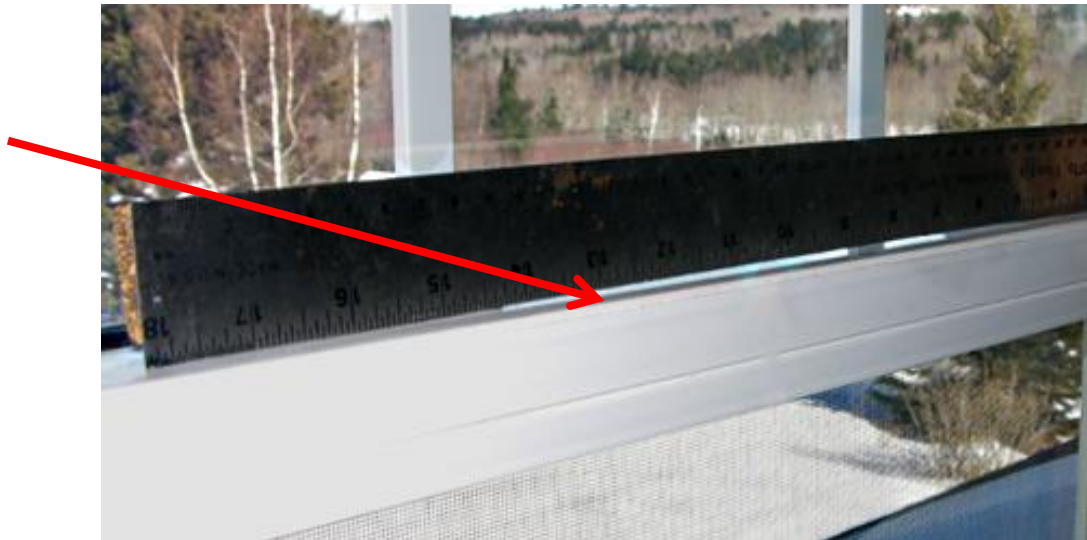
Mulled Window Issues

- **Individual windows are tested for various ratings**
- **Mulled windows are often not tested as an assembled unit**
- **Various modes of failure can result from the untested assembly:**
 - Mulled joints can allow water infiltration leading to leaks both inside and behind the flexible flashing
 - Window's welded corners can fail due to stresses



Bowing and Bending of Frame

- Due to the inherent flexibility of vinyl, framing members are often reinforced with steel.
- Framing members with long spans should be designed to limit excessive bending.
- Such bending will often result in reduced performance and the misalignment can make the weather-seals and glazing gaskets non-effective causing excessive condensation, air infiltration, and water infiltration.



Mulled Window

- Mulled joints have a beauty cap or cover
- Window fin is removed in order to join windows



Mulled Windows

- Mulled joint cap has been removed



Horizontal and Vertical Mullion Failures



Horizontal and Vertical Mullion Failures



Horizontal and Vertical Mullion Failures



Horizontal and Vertical Mullion Failures



Horizontal and Vertical Mullion Failures



Coped Joint Issues

- Assembly has continuous frame along entire perimeter.
- Horizontal mullion attaches to perimeter framed with a coped joint.
- This joint needs to be sealed and plugged.
- Extrusion of mullion is different than frame making transition complex and difficult to seal.
- Fastening of the mullion can end up in a drainage cavity, leading to corrosion of steel and fasteners.



Coped Intersection

Coped Mullion Issues



ABB2872-44890



Coped Mullion



ABB2872-19475



Coped Mullion



ABB2872-25986



Coped Mullion



AB32872-56211



Coped Mullion



Avoiding Failures

- **Glazing Tape**
 - Avoid tape reliant glazing systems, where possible.
 - If using a glazing tape assembly, reinforce with glazing gasketing.
 - If using tape only, use exterior glazed systems.
 - Review windows during construction and confirm tape adhesion and continuity.
- **IGU**
 - The less metal in the spacer, the less opportunity to condensation.
- **Frame Issues**
 - Keep the window sizes within Manufacturer tolerances.



Avoiding Failures

- **Reinforcement**

- Review shop drawings to confirm location and attachment of steel reinforcement. Steel shall not be in a drainage channel.
- Review shop drawings to confirm fastening and continuity of steel.
- Keep the big windows on the bottom.

- **Joinery - Mulled Windows**

- Avoid them.
- If you can't avoid them, be sure to have the cap properly sealant and properly locate fasteners.
- Keep sizing within window tolerances. Keep window weights below 400 pounds.

- **Joinery - Coped Joints**

- Seal transition with sealant and gasketed plug.
- Review shop drawings for coping fastener location to avoid drainage channels.



Objectives

- **~~Some Fenestration Basics~~**
- **~~Progression from Aluminum to Vinyl~~**
- **~~Pros and Cons of Vinyl Windows~~**
- **~~Technical Aspects of Vinyl Windows~~**
 - ~~Design Considerations~~
 - ~~External Glazed vs. Internal Glazed~~
 - ~~How do Drainage Paths Work on Vinyl Windows?~~
- **~~Understanding Why Vinyl Windows Fail~~**
 - ~~How are they Performing?~~
 - ~~What is Failing?~~
 - ~~What is Working?~~
- **Case Study**



Case Study 1

- **Apartment project was built in 2007-08 and consists of 4-5 stories of wood frame construction over a post tensioned concrete podium containing a garage and retail shops.**
- **The project uses "fin" style vinyl windows and there are Juliette balcony railings with sliding windows and sliding glass doors at the courtyard entrances.**
- **The windows are vinyl casement windows with steel reinforced mullions**
- **ABBAE was retained to assist in analyzing window failures.**



The Project, Case Study 1



Testing, Case Study 1

- **ABBAE performed several air and water infiltration tests, reviewed shop drawings, conducted visual observations of interiors, and reviewed previous reports.**
- **ABBAE also had ASTM E1105.01 and ASTM E783.02 window tests completed.**
- **Since the windows immediately failed the water and air tests due to glazing seal related failure, we isolated the glazing failures and performed tests for other failures.**



Glazing Failures

- **Several windows tested leaked at glass-to-glazing bead junctures.**
- **The windows are interior glazed and have a poor quality acrylic adhesive closed-cell foam glazing tape. These seals have failed in all windows where the glazing was tested.**
- **Water Test Failure:**
 - Windows were tested at 3.5 psf, 2/3rds of the Manufacturer's stated performance standards.
 - Of the three windows that were tested without isolating the glazing, all three failed to pass. This is a 100% failure rate.



Glazing Failures And Resultant Leak



Glazing Failure Analysis

- **The design of the windows caused premature failure of the glazing seals at the window-to-frame transition, and causes the windows to fail to perform. Design factors causing these failures are:**
 - Glazing is installed from the interior, which causes the glazing tape to be the primary line of defense against water intrusion. The tape is susceptible to UV and heat degradation, is of inferior quality, and is not a long-term solution to this condition.
 - The window frame is designed with a horizontal flat surface at the frame-to-glass joint, so water sits in contact with the glazing tape, causing premature Insulated Glass Unit (IGU) failure.
 - Current glazing tape is an acrylic adhesive closed-cell foam tape that is compressed with glazing stops at the interior. In our testing, we observed that the tape did not make uniform contact with the glass thereby allowing water to bypass the tape altogether.
 - When the glazing seal fails, water flows into the sill tracks of each piece of glass. This is sometimes the upper lites that have a drained horizontal mullion, and sometimes it is the lower sill track that has no method of managing water that enters the frame at that location.



IGU Being Removed



Glazing Tape Is Discolored And Stained From Dirt And Water

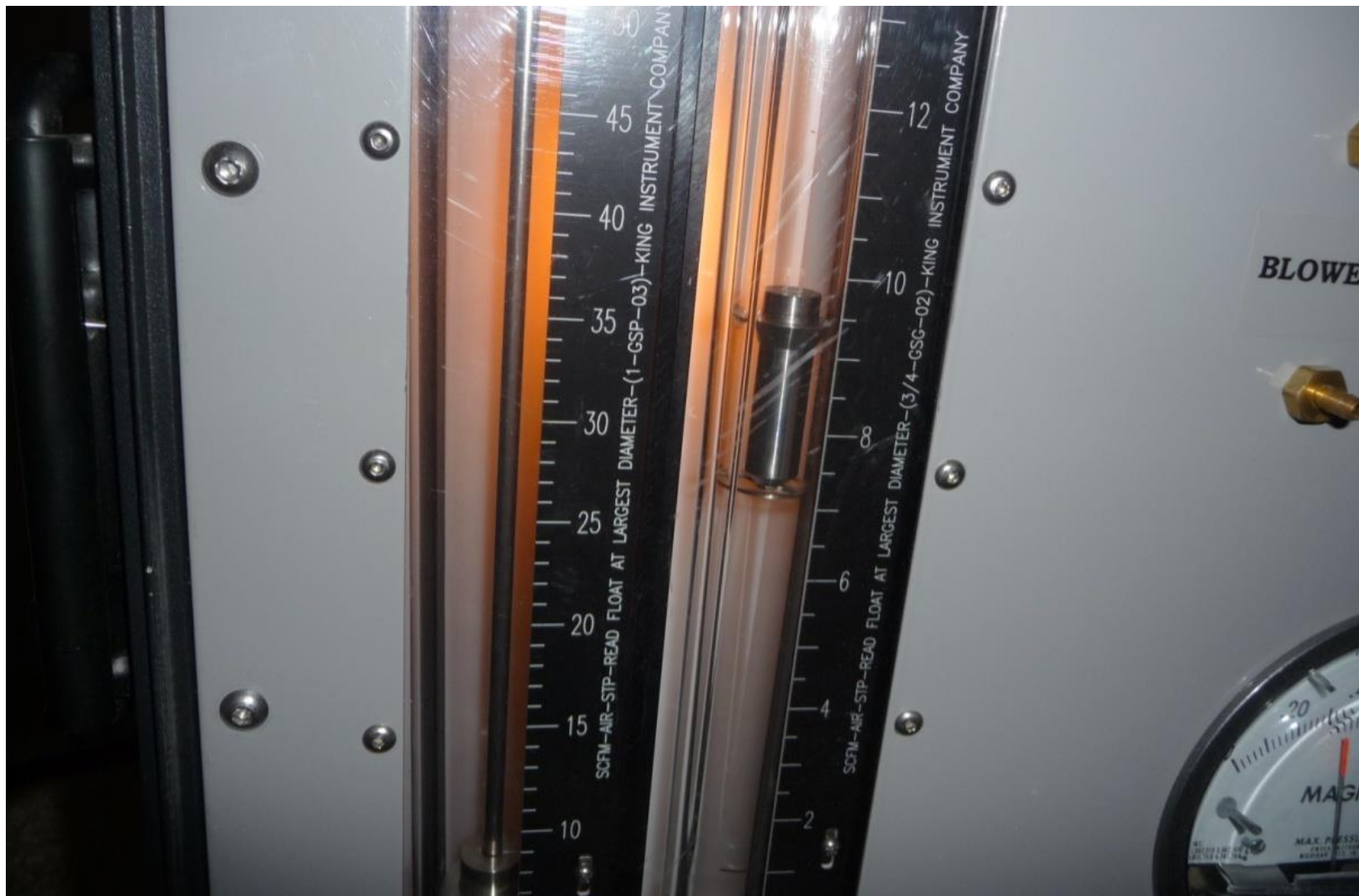


Laboratory Testing For Air Tightness

- **Glazing tape failure also causes Air-Leakage test failure:**
 - Due to failed glazing seals, windows tested (ASTM E 283-91) did not meet project specified air leakage performance standards.
 - Of the seven windows tested for air leakage all seven failed to meet the air leakage standards in Manufacturer's shop drawings. This is a 100% failure rate.



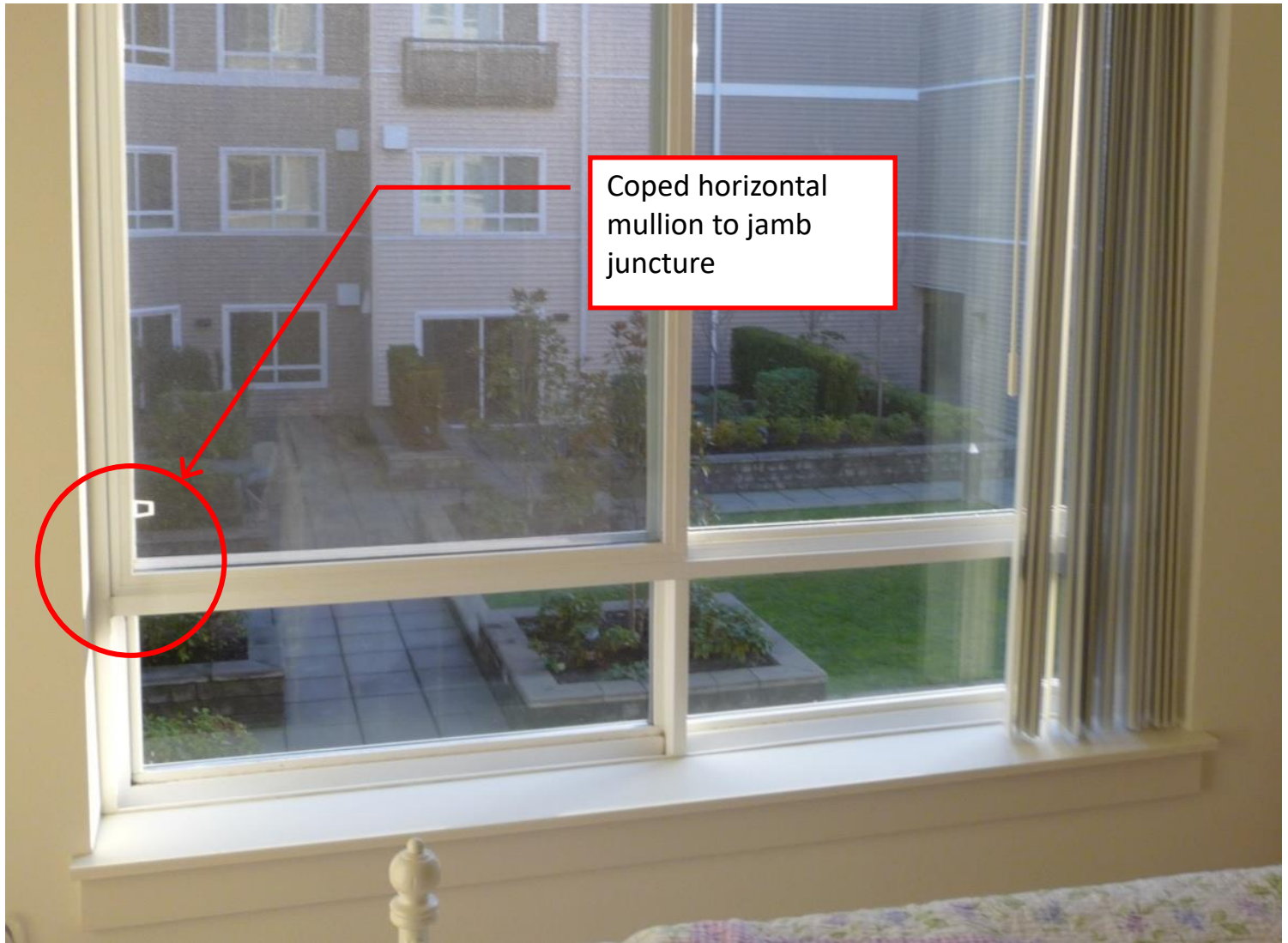
Air Pressure Gauge In Action During Air Leakage Testing



Case Study 1 In-Situ Air Leakage Test Chamber

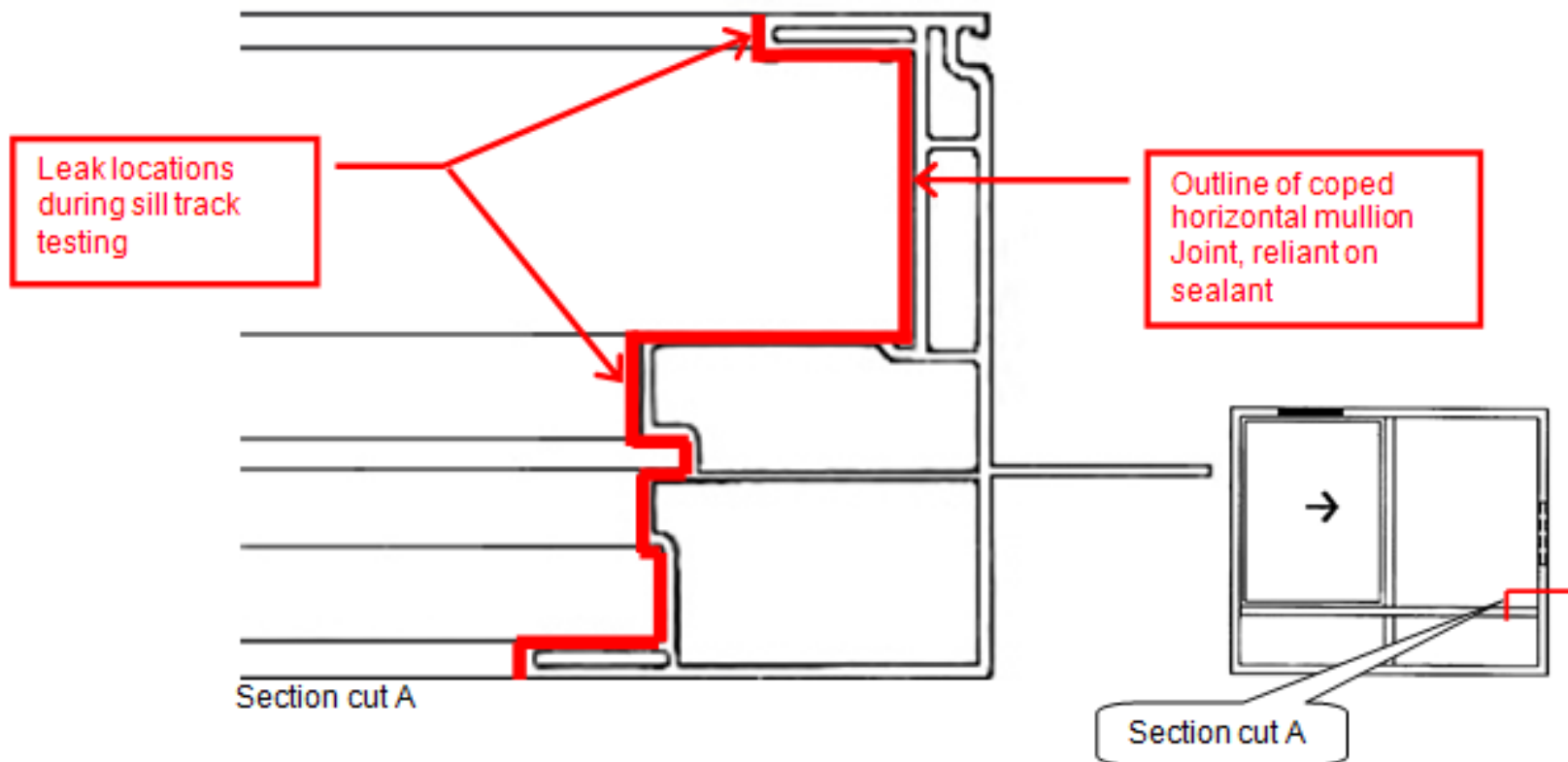


Case Study 1, Coped Horizontal Jamb Juncture



Leak Location During Sill Track Testing

- The sealant-dependent coped joint in the horizontal mullion has failed and allows water to leak through this junction and accumulate in the lower fixed “dry” sill track, which is not designed to manage water.



The Coped Intermediate Horizontal Mullion Is Improperly Sealed

- The horizontal-to-vertical coped mullion-to-jamb extrusion joint was improperly sealed in the factory and the leaks at this juncture were not discovered until after all the windows had already been installed.
- The manufacturer responded to a warranty claim and attempted to repair this condition in the field by applying sealant and injecting foam at this juncture. The frame was sealed with silicone sealant from the exterior of the joint at the positive and negative side of the seam and a hole was drilled and expanding foam was injected blindly at this juncture.
- This method of sealing the joint was inadequate for long-term performance, had failed again resulting in more water leakage and damage to interior finishes.



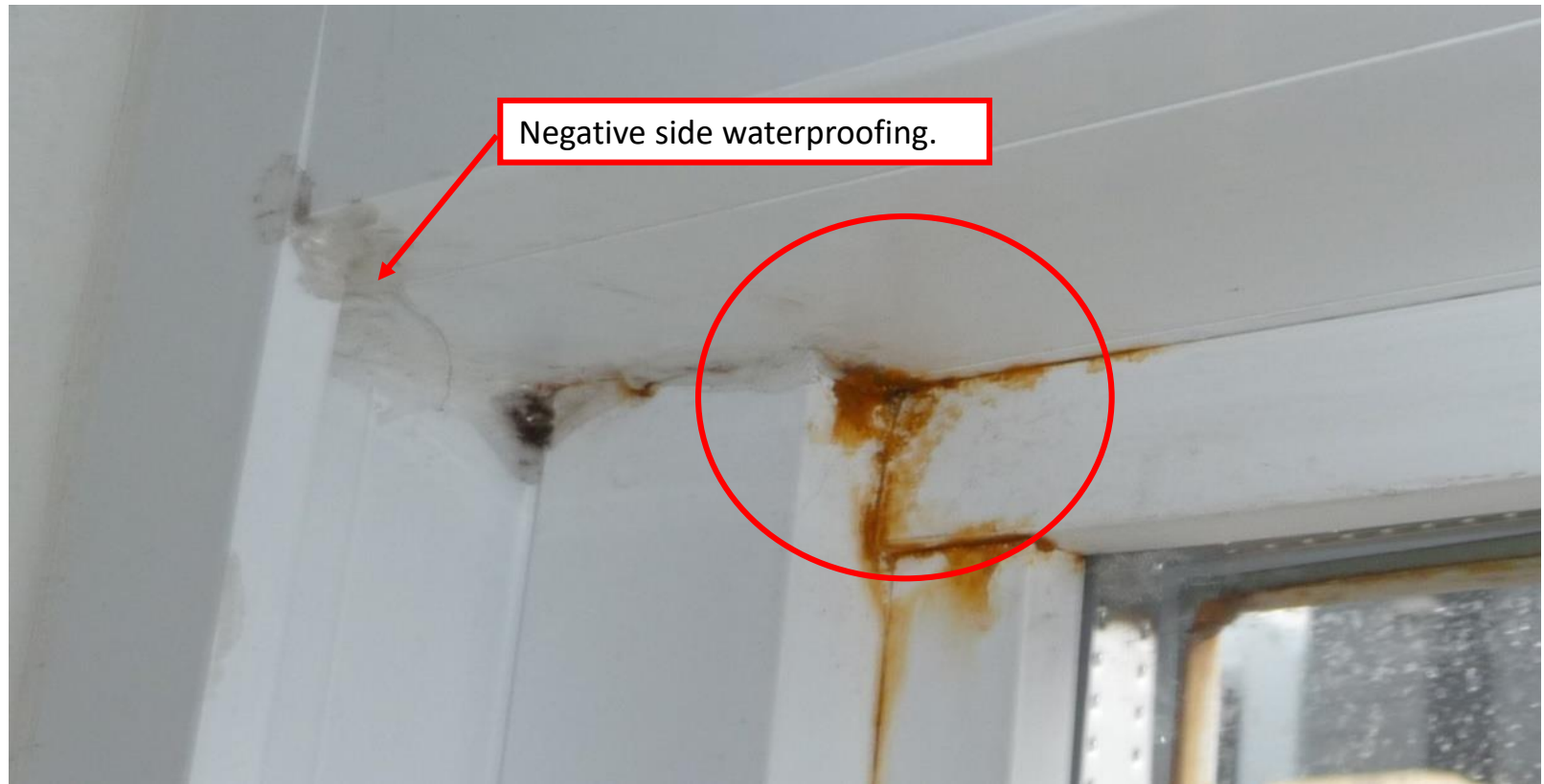
Coped Joint Failure



- A = Manufacturer attempted to seal leak by pumping foam at coped joint
B = Clear silicone sealant, failed attempt to seal coped joint



Staining From The Water In Contact With The Structural Reinforcing Causing It To Rust



- Sealant is installed at underside of coped horizontal-to-vertical mullion joint failed to stop leak. The leaks are rust staining from the structural steel reinforcement.



Window Drainage and Weeping Issues

- Water travels at the jambs and can rust the steel bar



Typical Build-Up Of Water in Lower Sill Track



- **This buildup is the result of water standing in this non-draining track.**



Water Intrusion-Damaged Wood Stool

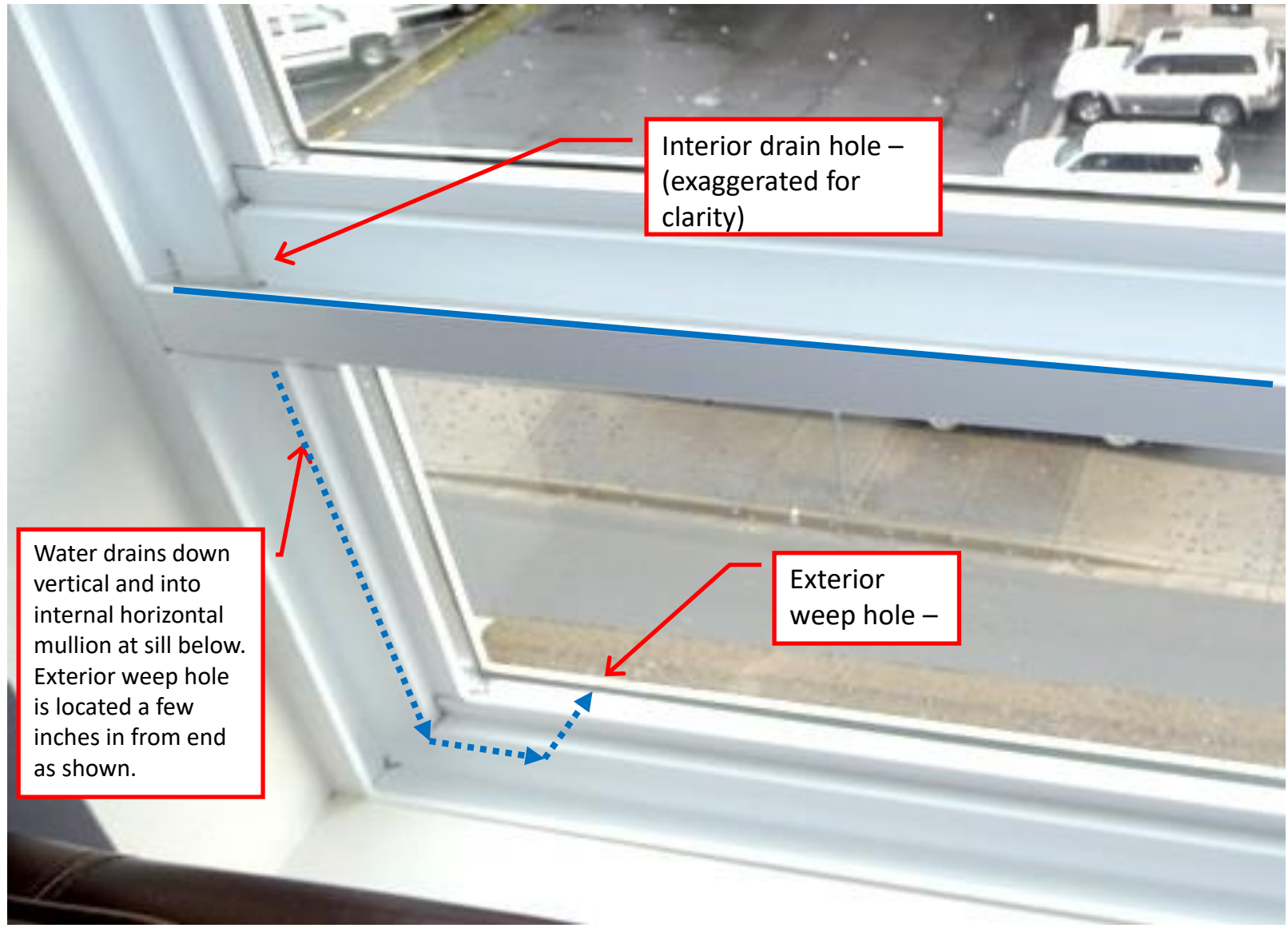


Improperly Constructed Weep Holes And Drainage Pathway

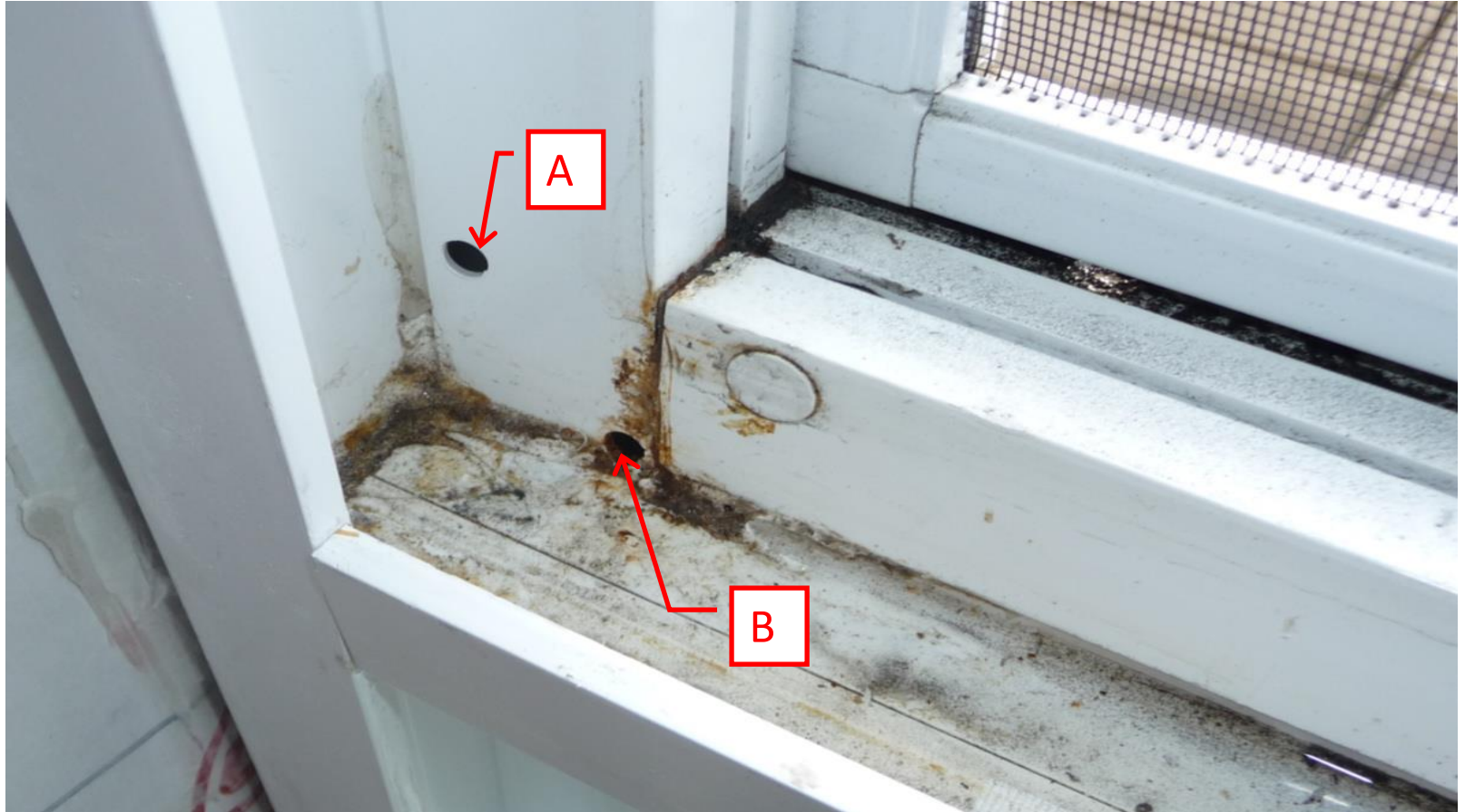
- Windows were manufactured with improperly constructed weep holes and drainage pathway.
- The weep holes were constructed with 5 mm diameter hole which encourages surface tension and prevents proper drainage down the pathway.
- According to the Glazing Association of North America, the minimum size of weep hole to prevent surface tension is 8 mm or 5/16th inch.



Case Study 1, Drainage Pathway Analyzed



Weep Holes

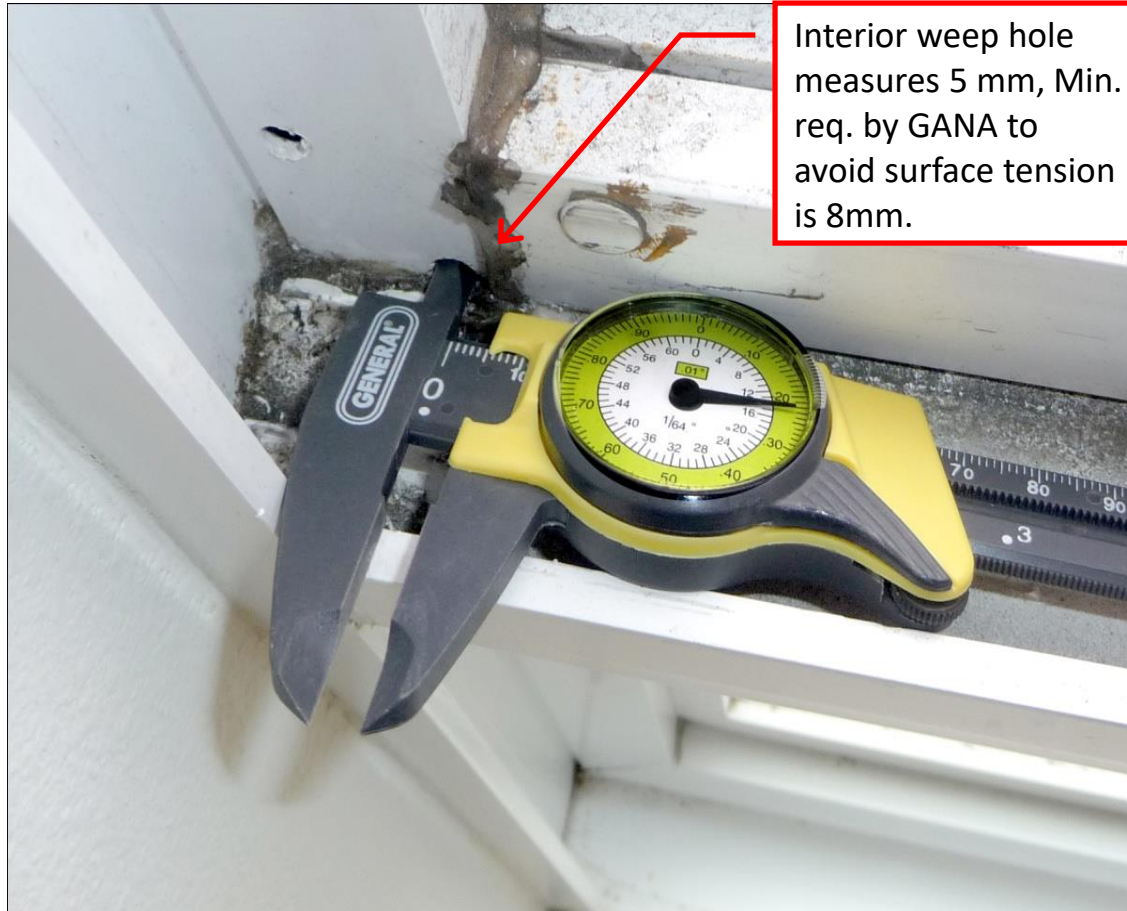


A = Pressure relief/equalization hole (after the fact).

B = Upper Drain Hole; drain hole is undersized and does not meet GANA minimum weep hole size of 5/16" (8mm). Drain holes measured are 5 mm in diameter.



Interior and Exterior Weeps



Exterior weeps are $\frac{1}{4}$ " high by $\frac{3}{8}$ " wide.

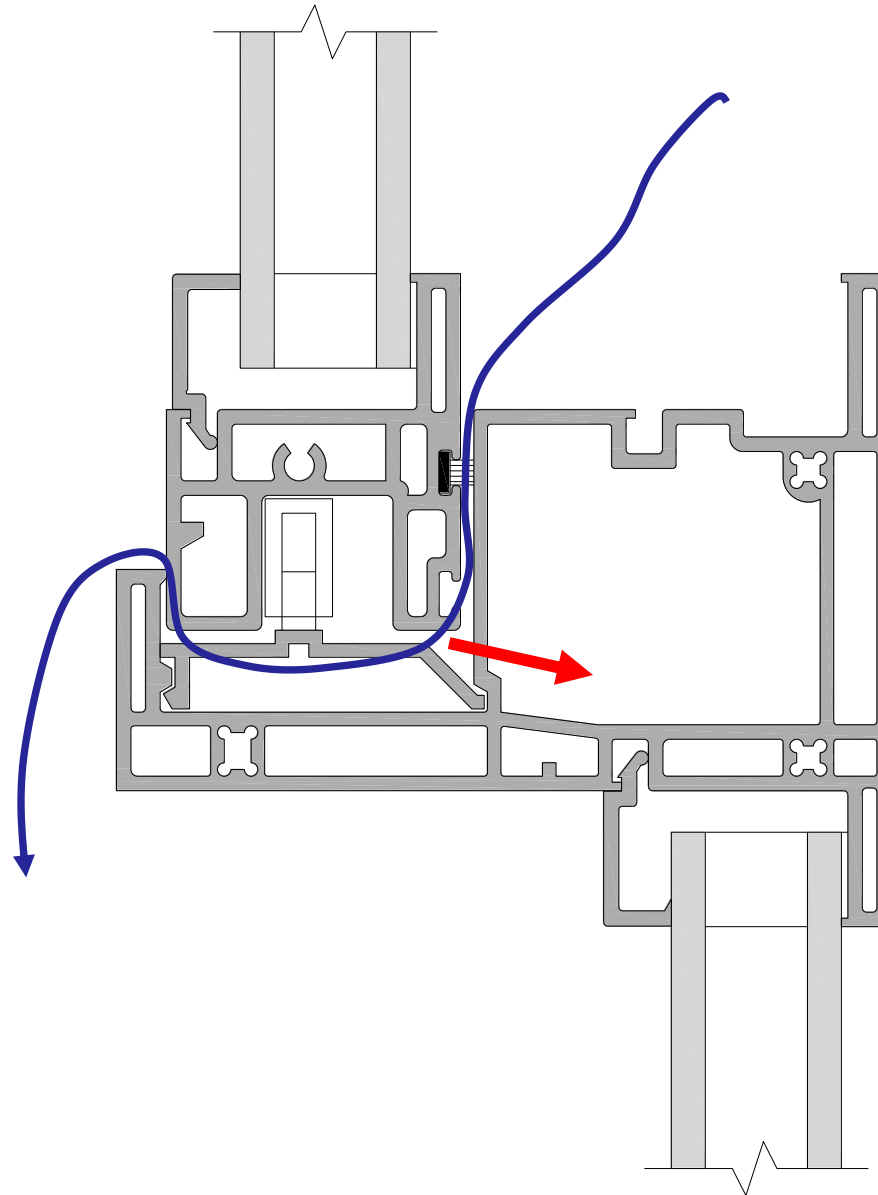


Drainage Defect Condition

- **Due to the above weep hole and drainage pathway construction the windows failed to perform per the manufacturer's performance requirements.**
 - Windows were tested at 3.5 psf, 2/3rds the Manufacturer stated performance standards at all windows where glazing was isolated from testing.
 - We isolated the glazing-to-frame connections to test only the frame conditions.
 - Water rushed into the frame from the operable sash-to-horizontal transom bar track.
 - Initially water was blown onto the stool through percolation, then water overwhelmed the intermediate transom and poured into the sill track and splashed onto the wood stool.
 - Once the sill track was overwhelmed the water flowed onto the wood stool.
 - Of the 13 ASTM E1105 water tests conducted at windows with the above described drain pathway construction, all 13 failed to pass the test.



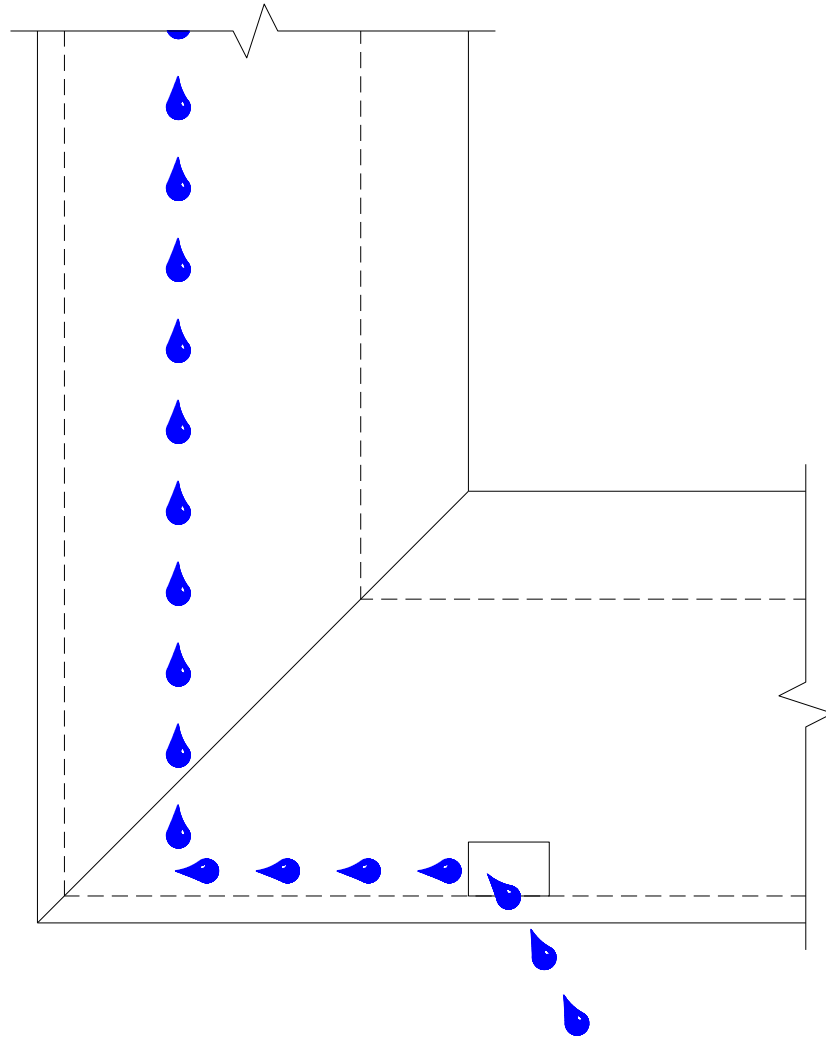
Horizontal Mullion



Drainage Testing Results - Continued



Elevation



Conclusion, Vinyl Windows

- Properly designed and manufactured windows seem to work well and are performing.
- Pre-mature failures are mostly due to poor manufacturing techniques and poor design
- Cheaper materials within a window system can cause premature failures
- Vinyl windows must be limited to smaller size openings
- Mulling smaller windows together to form a large window has inherent issues and risks



Conclusion, Vinyl Windows

- **Specify window sizes appropriate for the project**
- **Intermediate frame joints in window are usually not welded and often fail due to poor sealing techniques.**
- **Vinyl frames can be wavy and are more difficult to seal against glass because glass is flatter than the frame**
- **Glazing seals used in vinyl windows is often a foam tape which can fail due to UV, long term exposure to water and waviness of vinyl frames**



Thank You!

Questions?

